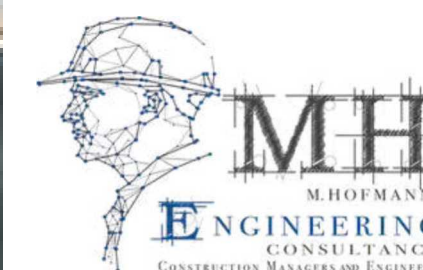




MHE GROUP

www.mhe.group



ABOUT MHE

MHE commenced its international operations in 1986, establishing licenses and registrations in several key regions, including the UAE, USA, Hong Kong, Indonesia, and Germany. Specializing in Design and Engineering, Construction Management and Consulting, General Contracting (including Design and Build projects), AAC plant engineering, Real Estate Development, and Real Estate Sales, the company is particularly focused on providing various construction services that utilize sustainable green building systems, with a specific emphasis on Autoclaved Aerated Concrete (AAC).

In the early 1990s, **MHE** expanded into markets across Russia, Sweden, Austria, and Germany. The company made a strategic return to the United States in 1997, subsequently branching out to the Caribbean Islands and the Pacific Islands. By 2010, MHE had opened its first office in the Middle East and has continued to expand its presence in the region ever since.

With over three decades of experience, **MHE** has established itself as a market leader in Sustainable Building System Design and Engineering as well as Construction Management. The company has designed, engineered, and constructed more than 3,000 buildings worldwide. **MHE's** expertise spans the entire project lifecycle, involving comprehensive services from Design and Engineering through to Construction Management and turnkey handover, which includes site work, utilities, roads, and bridges.



VISION & MISSION

To become your partner for all your design, engineering, construction, and real estate needs, we commit to delivering performance that meets the highest quality standards. Our approach emphasizes exceptional designs, comprehensive details, and meticulously crafted structural plans, all aimed at achieving swift, efficient results while minimizing construction costs. Our German construction management team, recognized for their well organized structure, is dedicated to ensuring the success of each project we undertake.

DEPARTMENTS

DESIGN AND ENGINEERING

By M.Hofmann Engineering Consultancy Ltd. A Malta Ltd and PT. MHofmann Engineering Consultancy in Jakarta as well as PT. MHE Group Indonesia in Bali

CONSTRUCTION MANAGEMENT AND CONSULTING

By M.Hofmann Engineering Consultancy Ltd. A Malta Ltd and PT. MHofmann Engineering Consultancy in Jakarta as well as PT. MHE Group Indonesia in Bali

CONSTRUCTION

By MHE construction part of MHE International LLC a US LLC and in Europe MHE Concept GmbH a German Corporation

REAL ESTATE DEVELOPMENT

By MHE Real Estate part of MHE Consulting Services S.L. and in Europe by MHE Concept GmbH a German Corporation

AAC PLANT ENGINEERING

By MHE Engineering Solutions a Hong Kong Limited

AAC PRODUCTION

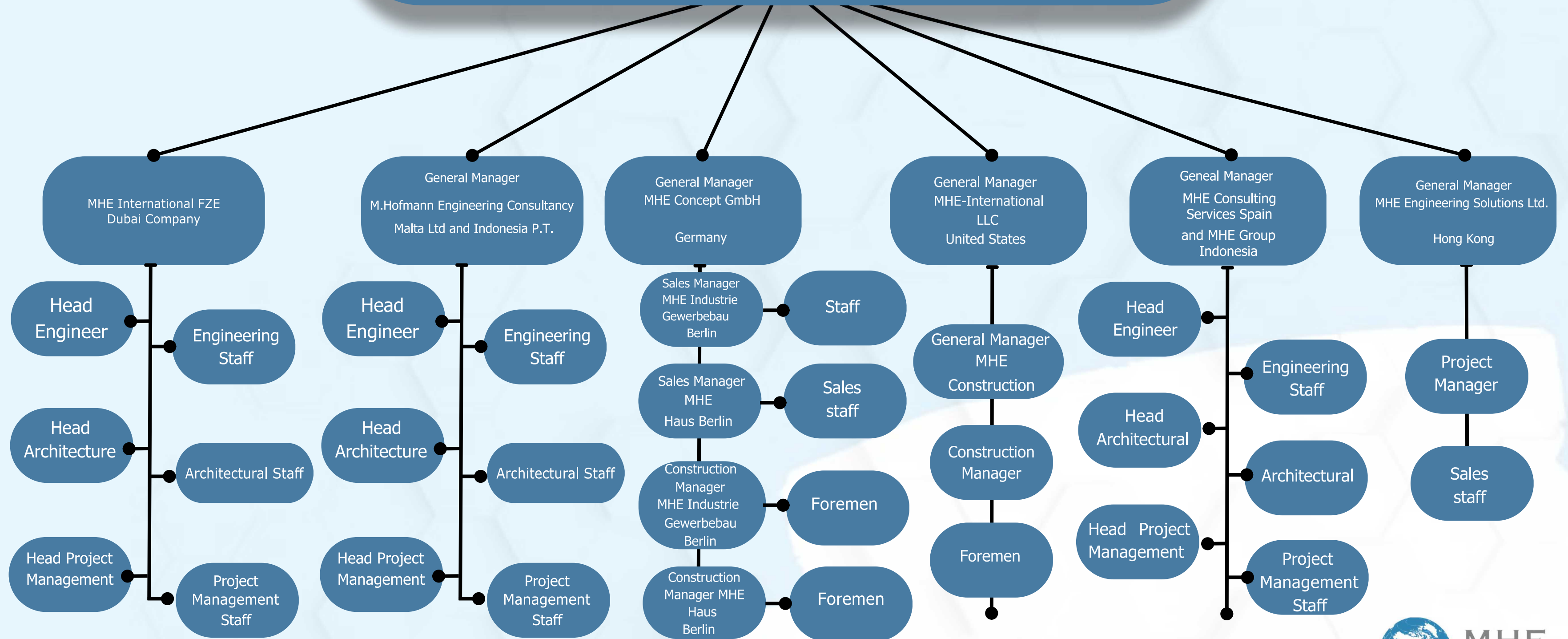
ACCO AAC a brand of MHE Group

AAC MATERIAL SALES

Worldwide ACCO AAC a brand of MHE Group



BOARD OF DIRECTORS MHE GROUP

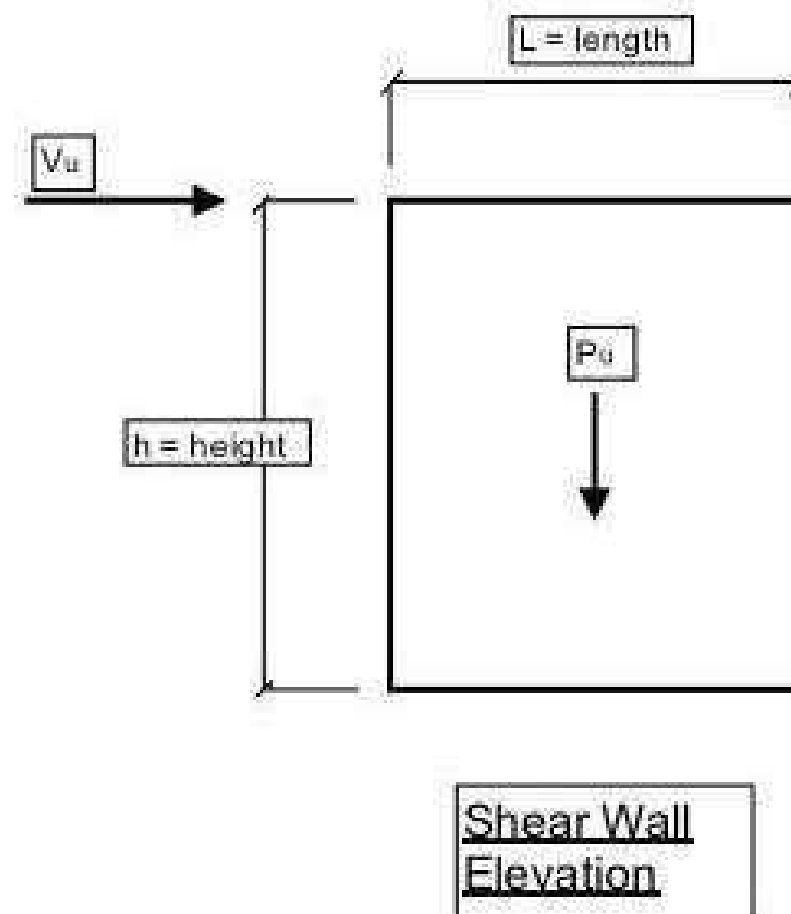


DESIGN ENGINEERING / DEPARTMENT

- Master planning, Architectural Design including all MEP Design, Shop Drawings, Structural Design, Calculations and Full Permit set
- Design and Engineering Service
- Structural and MEP Engineering
- Service Safety Inspectors, Quality Control

Panel properties:

wall type =	block
length of panel L (m) =	1.60
height of panel h (m) =	4.00
thickness of panel t (mm) =	200.00
fully mortared joint =	yes
FAAC (kPa) =	4000
yield strength of reinf f_y (kPa) =	420000
density of AAC ρ (kN/m ³) =	6.0
vert reinforcing A_s (mm ²) =	201
d (mm) =	1400
Horiz reinforcing (mm ²) =	113
Horiz reinf spacing (mm) =	2
EAAC (kPa) =	640292
S (mm ³) =	65333333
I (mm ⁴) =	4.573E+10



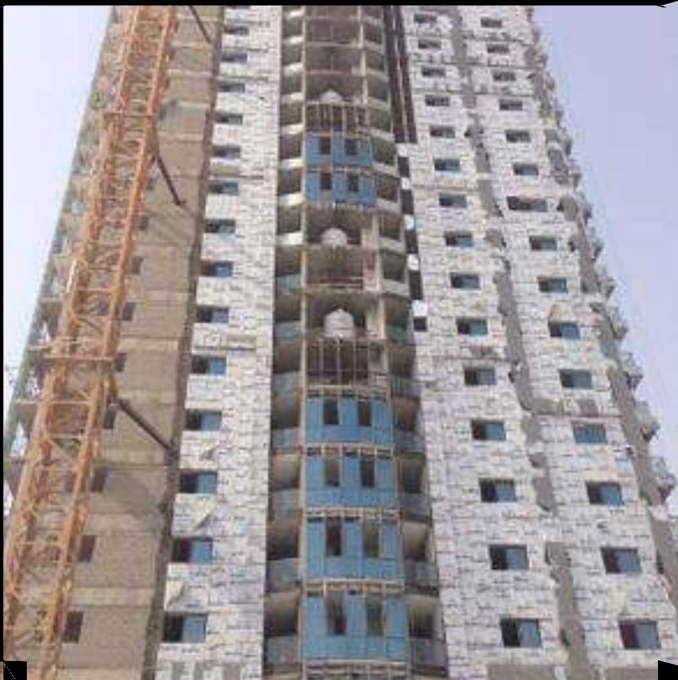
DESIGN AND ENGINEERING DEPARTMENT

- Project programming, Design review, and Constructability reviews as well as feasibility studies.
- Value Engineering to increase construction Quality and Construction Speed and to Decrease Construction Cost.
- Structural Calculations and Analyses
- Construction Detail Drawings
- Shop Drawings
- Renderings and Visualizations
- AAC Fabrication Drawings and Reinforcement Designs of Reinforced Units



CONSTRUCTION DEPARTMENT

- Construct entire projects including site work, utilities, roads and bridges
- Design and Build or per BOQ, Specs and External Drawings and Structural Analyses
- Turnkey projects or just shell construction



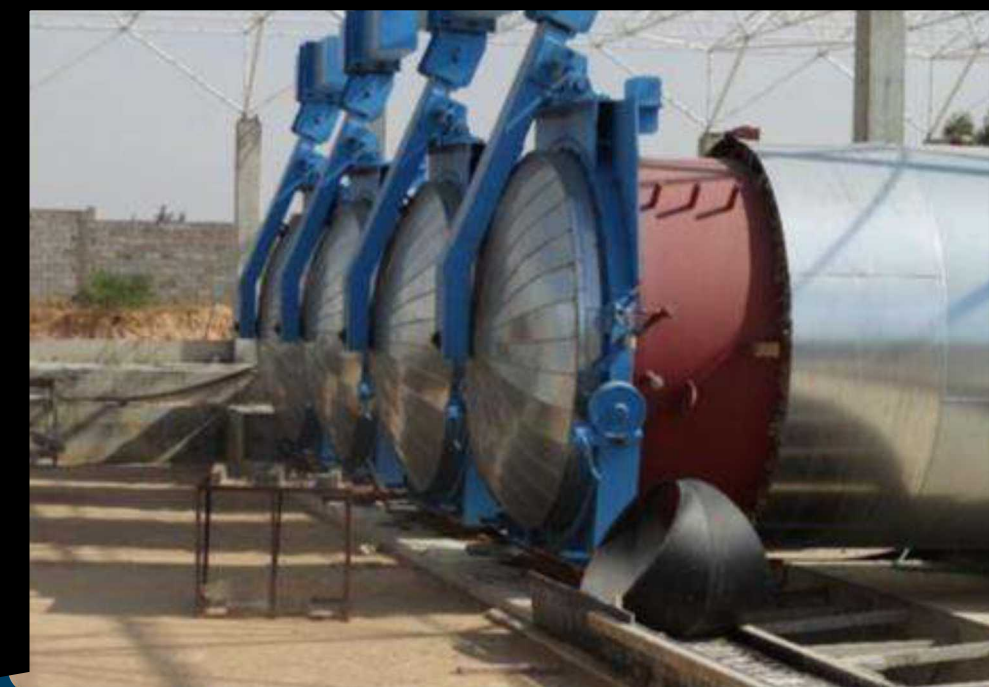
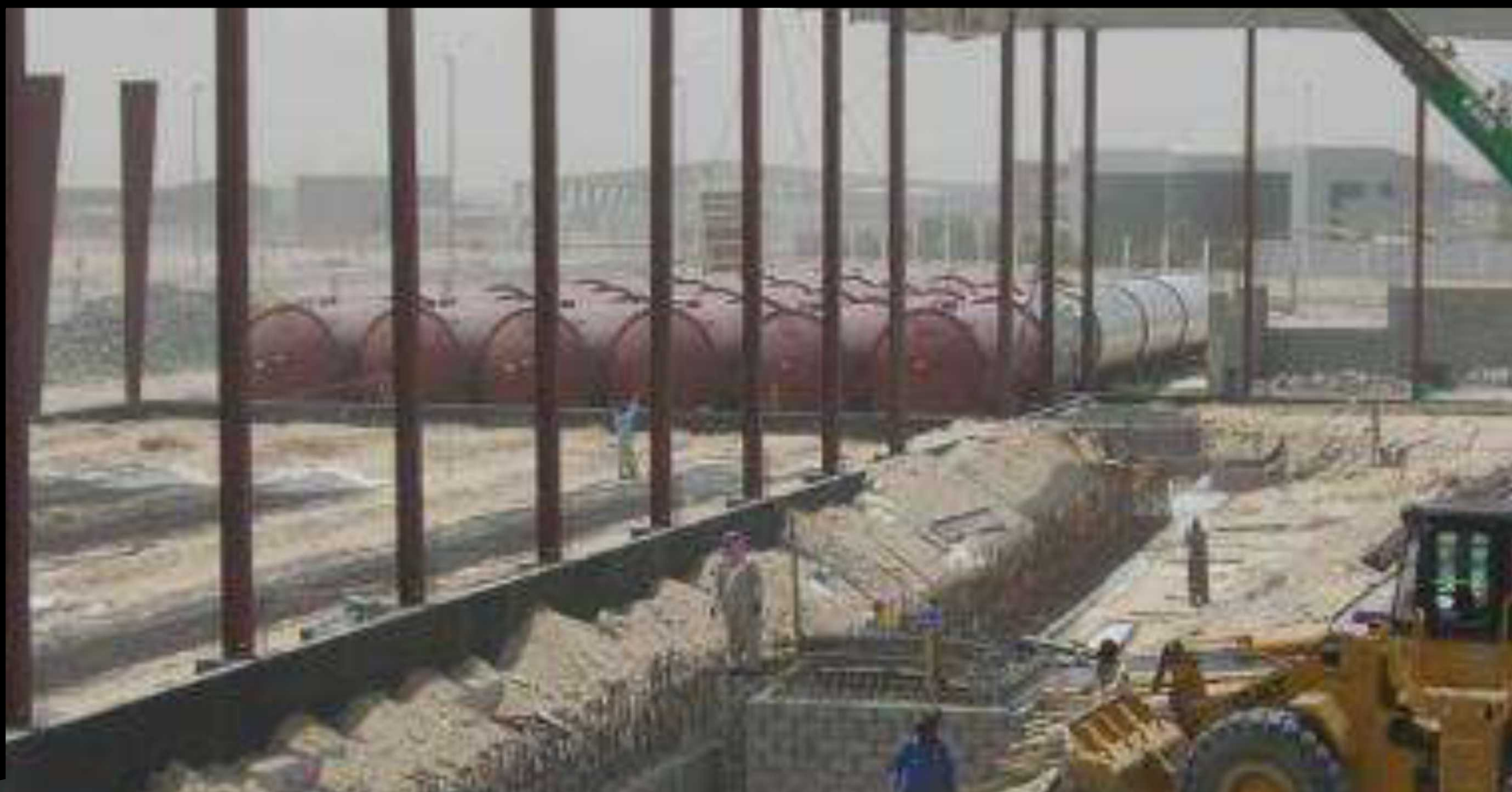
CONSTRUCTION MANAGEMENT DEPARTMENT

- Project Controls (construction schedule, cost control, & estimating)
- Project Management, Onsite Supervision, Manage and Direct Contractors
- Project Construction Coordination
- Project Administrators / Document Control
- Onsite Quality Control
- Work Inspection
- Progress Payment Approvals
- Review and Report any Delays or Variations



AAC PLANT ENGINEERING

- Deliver and Install new AAC Plants
- Maintain, Repair and Modify existing AAC Plants
- Plant Expansion
- Managing AAC Plants
- Teaching AAC in Applications





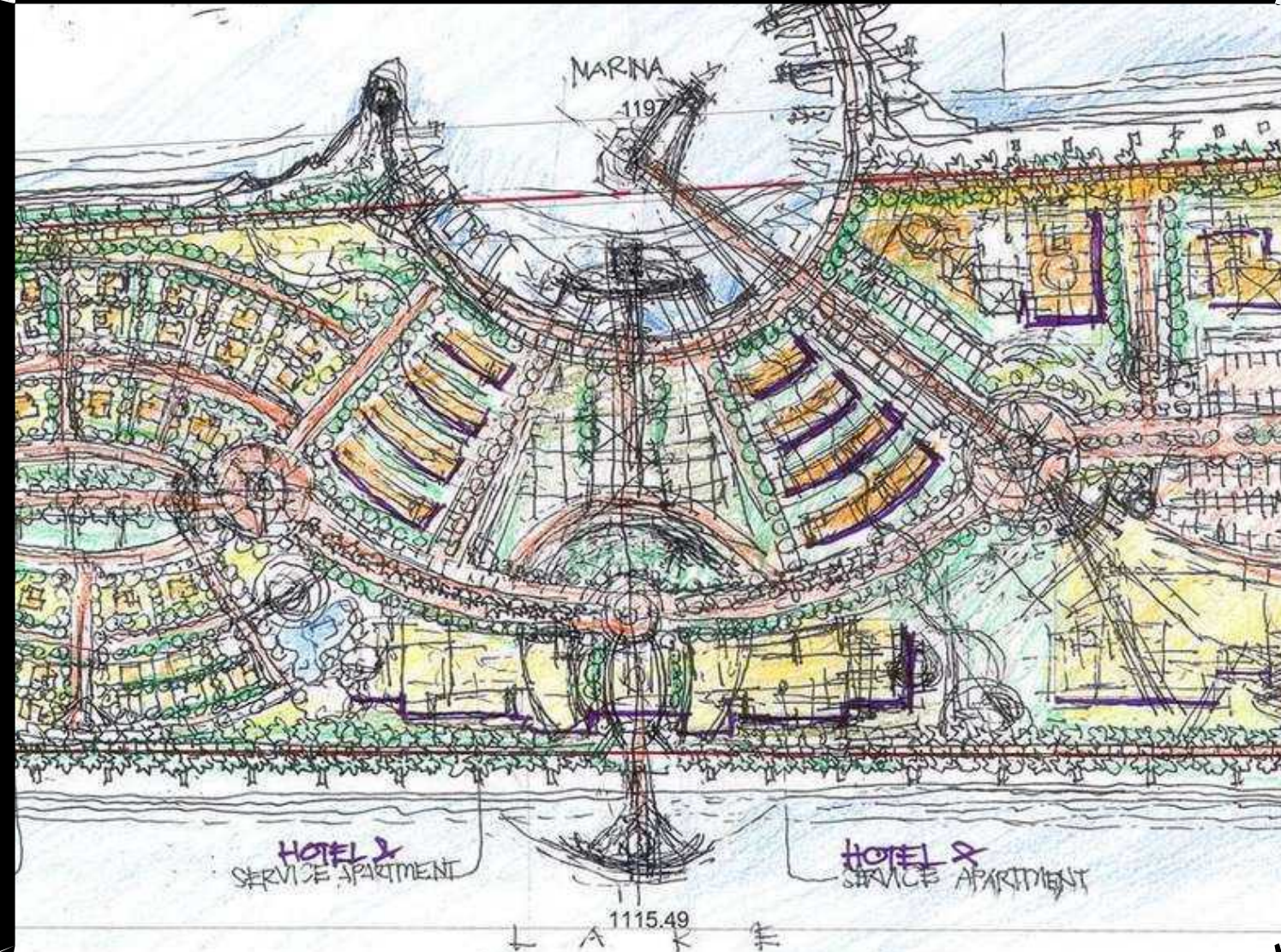
PRODUCE AAC

- Produce reinforced and unreinforced AAC
- Sell and distribute it worldwide



REAL ESTATE DEVELOPMENT AND SALES

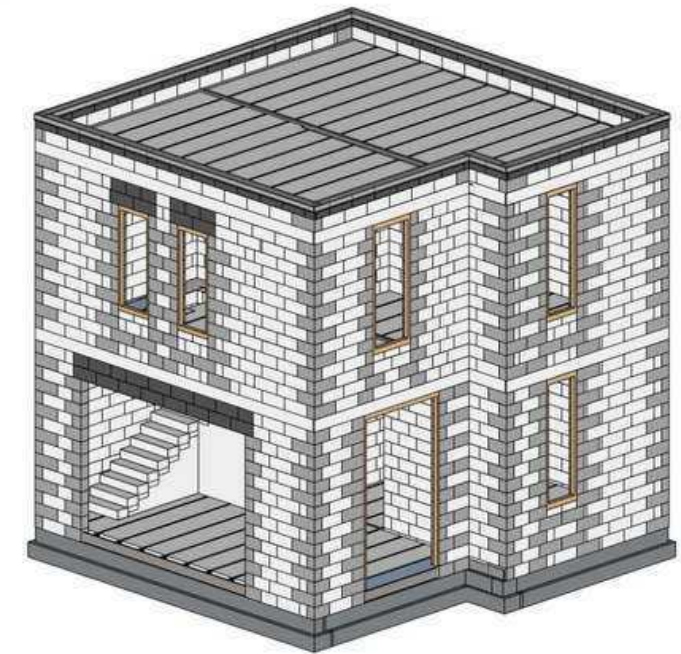
- From Property Purchase over Development to Sales
- MHE Provides A to Z Service



OUR UNIQUE SYSTEM

- Our proprietary Construction and Production System, along with our Engineering System, is designed to create buildings and projects that not only meet the latest building codes but also exceed current energy standards.
- We offer our services directly to owners, investors, and developers, ensuring that our construction team well educated and skilled manages projects with the utmost quality while minimizing construction time.
- Our unwavering commitment to your success is supported by rigorous schedule and budget control.
- We foster a “Make it happen” and “Can do” culture, providing complete, real time visibility into your project.
- Thanks to our unique company structure, we offer a comprehensive ONE STOP SOLUTION from A to Z.

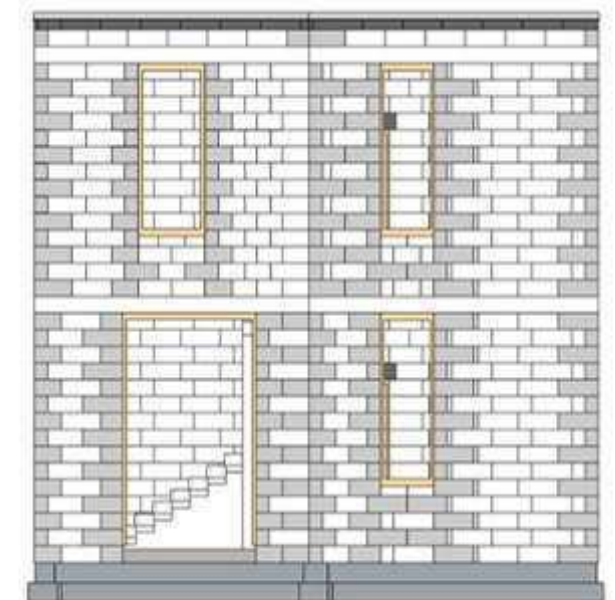
PERSPECTIVE



FRONT



RIGHT



HISTORY OF MHE

- 1986 Formation of the first Design / Engineering Division in Florida
- 1989 Opening of a Development Division (Bauträger) in Berlin / Germany
- 1997 Opening of a Construction Management Division in Florida USA
- 2005 Opening of a Construction Management / Engineering Office in Hawaii USA
- 2008 Opening of a Sales Office in Seattle, USA
- 2010 Opening of a Construction Management / Design / Engineering Office in Ras Al Khaima UAE
- 2011 Opening of a General Contracting Office in Abu Dhabi UAE
- 2013 Opening of a Design Build Office in Dubai UAE
- 2018 Opening of a Construction and Design / Engineering Company in Germany
- 2018 Opening of a Real Estate Company in Berlin Germany
- 2019 Opening of a Design / Engineering Firm and Project Management in Malta
- 2020 Purchase AAC Plant ACCO AAC
- 2021 Opening of a Holding Company in the UK
- 2021 Opening of a Project Management Company in Hong Kong
- 2022 Opening of a Consulting Company in Spain
- 2024 Opening of a Project Management, Construction and Architectural Engineering Company In Indonesia
- 2024 Opening of a Engineering Consulting Company in Hong Kong



ACHIEVEMENTS OF MHE INTERNATIONAL LLC



- Largest Developer in Berlin from East Germany 1996
- Largest Autoclaved Aerated Concrete Contractor in USA 2001
- First AAC Load Bearing Contractor in UAE 2010
- First AAC Load Bearing Contractor in Africa 2021

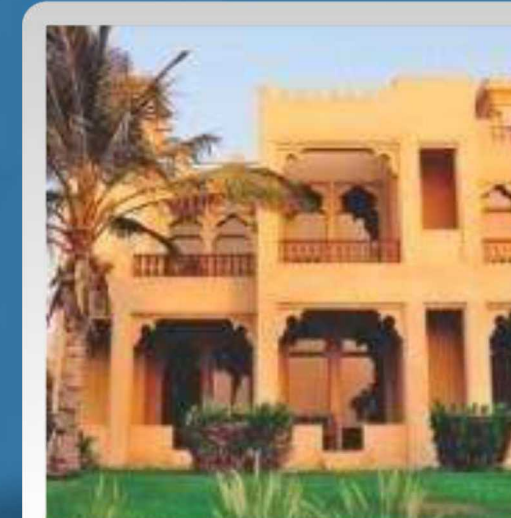
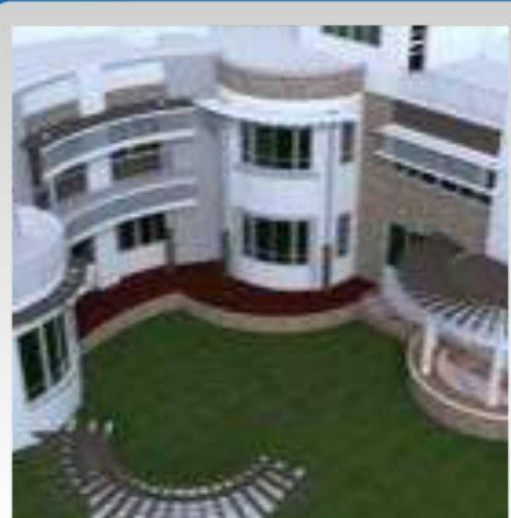


CLIENTS

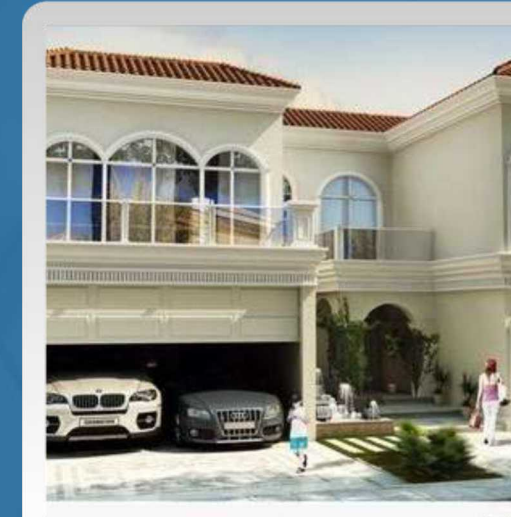
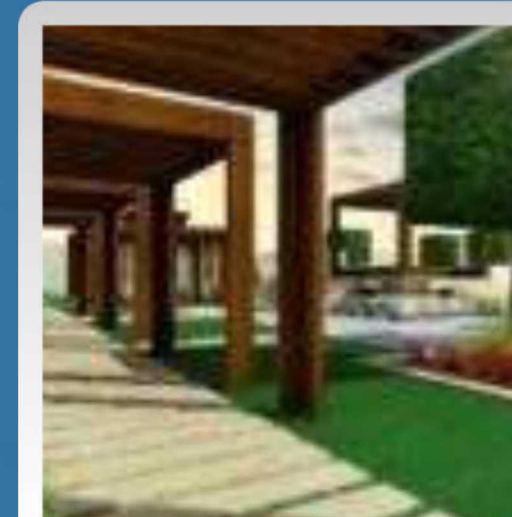
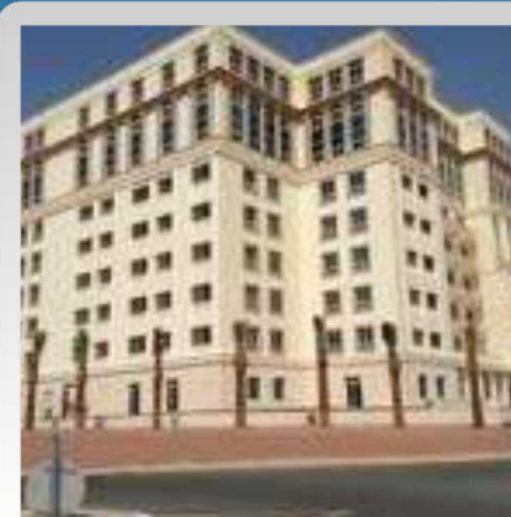
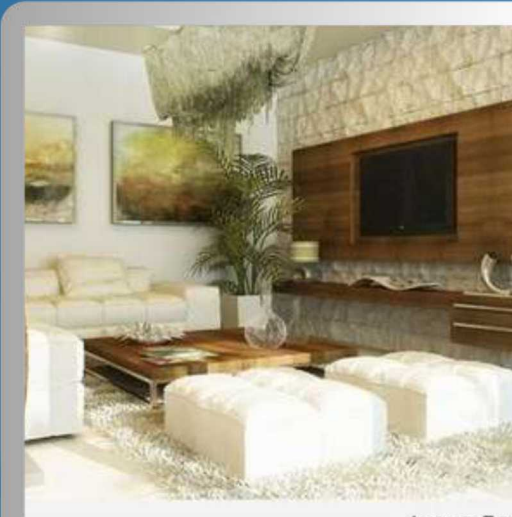
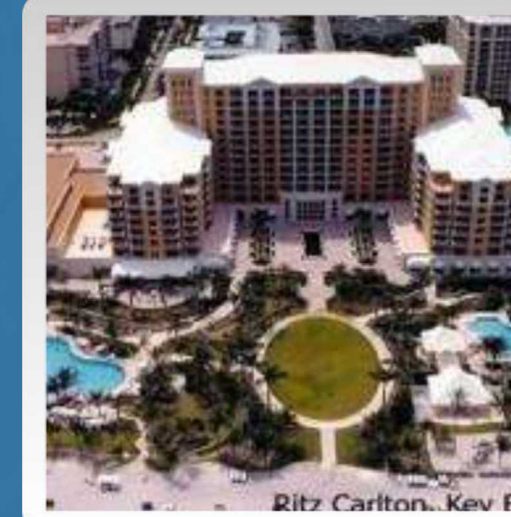
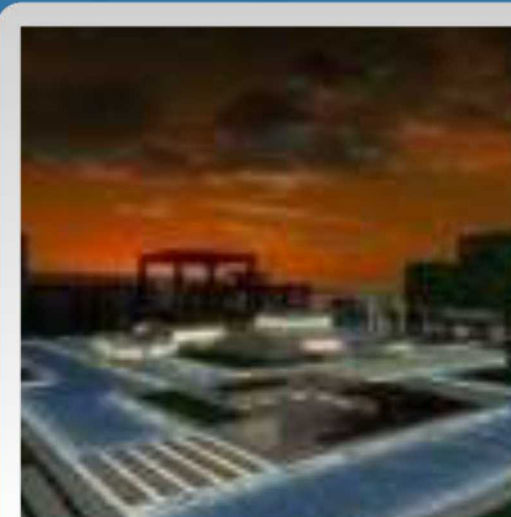


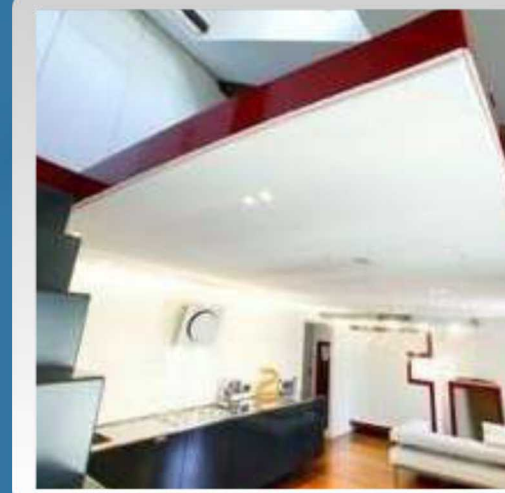
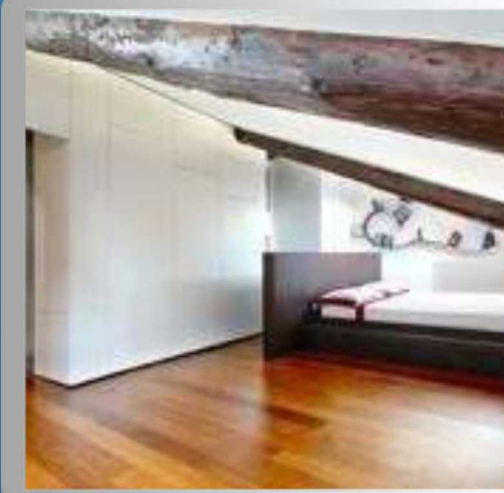
AFFILIATIONS



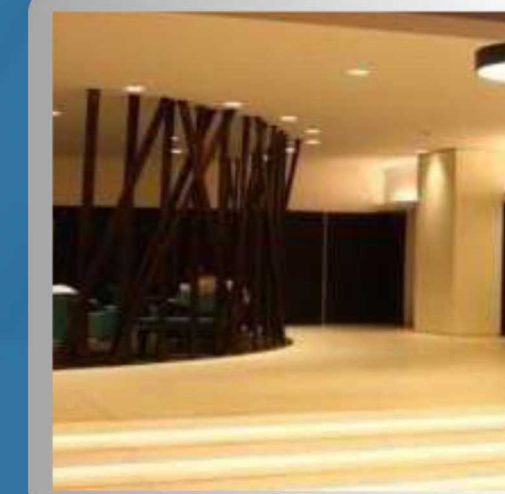
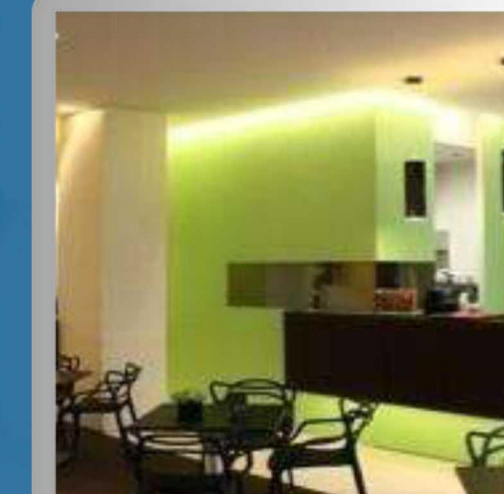
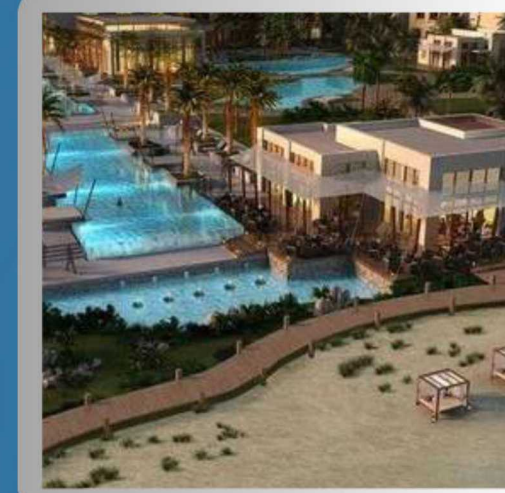


PROJECTS





PROJECTS



MICHAEL HOFMANN

Founder of MHE



Dipl. Ing. Michael Hofmann is a seasoned construction professional with 35 years of diverse experience in the industry. Throughout his career, Michael has designed and engineered hundreds of projects, taking the lead in constructing the majority of them. His extensive sales and marketing background has been a tremendous asset for developers across various projects, significantly enhancing market exposure. Michael has expertly managed the entire construction cycle, from conception and proforma development to design engineering, constructability analysis, value engineering, cost estimates, scheduling, permit approvals, construction, and final project close out while maintaining full profit and loss responsibilities. Notably, most of his projects utilize Autoclaved Aerated Concrete (AAC). His combined expertise in sales, marketing, design, and engineering makes him an invaluable asset on every project he undertakes.

License

- Structural Masonry License C-8569
- Professional Engineer P2639
- Real Estate License IM 948566
- Electrician License ENT 83755
- Crane Operator H 155-540
- Commercial Pilot 590616923
- Master Science and Civil Engineering
- Bachelor Managing/ Marketing Degree
- Business Degree
- Autoclaved Aerated Concrete Installer (Bauakademie Berlin)
- Construction License for Structural Masonry
- Fluent in English and German (partly Russian and Swedish)

PROJECT REFERENCES

- GERMANY, RUSSIA, SWEDEN and AUSTRIA
- Tampa Bay Tech Center Tampa, Fl
- Genertek, Energy Building Lakeland, FL
- Titusville High school Titusville, FL
- Egypt Lake Elementary School Tampa, FL
- Villa Rosa, Elementary School Tampa, FL
- South East College Lakeland, FL , 5 Buildings 3 story each
- Mendenhall Elementary School Tampa, Fl
- Mitchel Elementary School Tampa, Fl
- High End Residence, Windermere, FL
- Avalon Park-Duplex Sarasota, FL , 9 Buildings 3 story each
- Holiday Inn, Hotel Sarasota, FL, 6 story Hotel
- Fish Music Restaurant, Turin, project, G*AA
- Golden Glades HOV North Miami
- American Airlines Cargo Building Extension Miami, FL
- Challenge Air Cargo Facility , Miami, FL MIA
- Porta Susa Train Station, Turin, International competition, G*AA
- Food Lion store 511 Jacksonville, Fl
- Grove Town Homes Jacksonville, FL
- Microtel, Hotel, Lady Lakes, FL, 4 Story 120 room Southern
- Fortune House Brickell Ave, Miami, 28 story Hotel
- Apartments
- Randall Store Woodland, TX 9,000 sqm wholesale center

1986-1997
1997
1997
1997
1998
1998
1998
1998
1998-1999
1999-2000
1999-2000
1999-2000
1999-2000
2000
2000
2000
2000
2000
2000
2000
2000
2000-2001
2000-2001
2001
2001

- Hotel Massai, Lugano, Switzerland, hypothesis of
- project for a hotel of 2000 sqm, G*AA
- Ocean Steps South Beach, Miami 16 story condominium tower
- Ritz Carleton Hotel Key Biscaya, Miami, 22 story
- Logistic Center for Louisiana DOT Chalmette, LA
- Private Apartment, Turin, 90 sqm, G*AA
- Private House, Villa Violetta, Lugano, Switzerland
- Lan Chile/Fine Air Eastern "U" Project , Miami FL
- Sound Barrier wall project SR 51 Phoenix, AZ
- Neo River Lofts Miami River
- Business Development, Miami 28 story
- Sleep Inn Hotel, Ocala, FL 74 rooms, 3 stories Building
- Private Apartment, Turin, 175 sqm, G*AA
- Fort Lauderdale, FL, 24 story tower
- Giorgio Armani Boutique, Milan, 215 sqm of extension of "Armani Collezioni"
- Two Restaurants, Burger King and KFC, EwaBeach, Hawaii
- Private Apartment, Turin, 90 sqm
- Sound barrier Wall, 300 m long on sloped property
- Haiku, Hawaii
- Residences, Ghana
- Private Apartment, Turin
- Armani/Nobu Restaurant, Milan

2001
2001
2002
2002
2003
2003
2003
2003-2004
2003
2004
2004-2005
2005
2005
2005
2005
2007
2007
2007
2007
2007



PROJECT REFERENCES

- Warehouse, Waipaha Hawaii
- High end Residence, Kaanapali, Hawaii
- Residencial Towers and services, Mumbai, 524 residencial units + 6000 sqm of services, G*AA 2007–2008 High end Residence, Lahaina, Hawaii
- International Campus To MOI
- University Campus, Finchley Road, London UK, Extension of the ESCP Europe campus, G*AA
- Child Clinic, Tirana, Albania, preliminary and definitive project, G*AA
- High end Residence, Anguilla, West Indies
- Residence, Kalihi, Hawaii ,3 stories
- High end Residence Subdivision, Tortula
- Private apartment, Turin
- Residential and Commercial Projects in UAE
- 5 Chalets, Main Building, Pool Building and Service Block with 30,000 m2, Abu Dhabi
- Residencial Towers and services, Malad, Mumbai, 33000 sqm, G*AA
- Residencial Towers and services, Mulund, Mumbai, 38000 sqm, G*AA
- Hotel Manin, Milan
- Project Club, London, G*AA
- Residencial Towers and services, Goregaon, Mumbai, 42000 sqm, G*AA
- High End Shopping Center, Abu Dhabi

2005–2008
2006–2008
2006–2008

2007–2008
2008

2008

2008
2008
2008
2008–2009
2009–2010
2010–2012

2012

2012

2012–2013
2012–2013
2012–2013

2012–2013

- Residential Villa, Brescia, garden design with swimming pool and underground garage, G*AA
- Two High rises, DUBAI- two Tower 20 & 23 floors, Villa St. Tropez, France, renovation of an ancient villa of 500 sqm, G*AA
- Residencial Towers and services, Andheri, Mumbai, 39000 sqm, G*AA
- Factory in Tripoli, Libya
- Tensile projects under CENO Membrantechnology GmbH, Germany, Holland, Denmark (Tabaluga, Wöhr Fassaden, Membrandach Beck, Sopus Campus,Schmetterlingswiese Österreich,
- Tannenhäusen, Alliander Attika, Meyerwerft, EcklenburgTheater u.s.w.)
- Retractable roof , Peek & Cloppenburg, Duisburg 5 star hotel in UAE
- Bus station Essen Kupferdreh,
- Retractable roof for a cruise Ship Meyer Werft, B
- Five Single Family Homes in Germany
- Four Warehouses in Germany
- ONGOING PROJECTS: AAC Factory in Bishkek, Kyrgyz Republic 1000 residential units and an AAC factory in Rwanda Two High Rise buildings in Dubai, UAE , Boutique Hotels and exclusive villas and resorts in Indonesia, Consultation of AAC factories in Indonesia

2012–2013

2012–2013

2013–2014

2013–2014
2014–2016

2014–2016

2017–2019

2018–2019
2018–2019
2018–2019
2019
2020–2024



CONTACT US

 www.mhe.group

 info@mhe.group



linktr.ee/mhe.group.indonesia



MHE Engineering Solutions Limited
Brn 77291068, 7/F, MW Tower, 111,
Bonham Strand, Sheung Wan, Hong Kong



+49 176 15000700



MHE Concept GmbH
Freiheit 32 a 13597
Berlin Germany



+49 176 15000700



MHE Group Limited RM 6A 7/F BLK GRAND
IND BLDG, 159-165 WO YI HOP RD KWAI
CHUNG NT, Hong Kong Reg.# 2946005
Cert.# 71906784-000-05-20-9



+852 81700209



M.Hofmann Engineering
Consultancy Ltd 44.Triq Sant
Antnin Slm 3021Sliema.- Malta



+356 99 000 700



PT. MHE Group Indonesia
Jalan Danau Tamblingan, No. 40
Sanur, Denpasar Selatan, Kota
Denpasar, Bali, 80228



+62 811 39609700



MHE-International LLC
3511 Silverside Road Suite 105
Wilmington, DE USA - 19810



+1 302 525-0554



MHE International FZE
1Emaar Square Office,
Building 4, 1st floor , 106
Ajman, Dubai UAE



+971 568834117



MHE Consulting Services
S.A.Carretera vieja de Guaza
S/N 11, suite 406, 38650 Los
Christianos - Tenerife Spain



+34 662655900