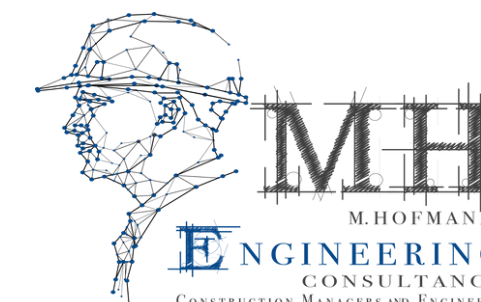




MHE GROUP



ACCO
AERATED
CONCRETE
SYSTEMS



International Construction Management and General Contractor,
Real Estate Development, Design, and Engineering
specialized in Autoclaved Aerated Concrete

Since 1986

MHE started its international companies in 1986. **MHE** has licenses and registrations in the UAE, USA, Malta and Germany.

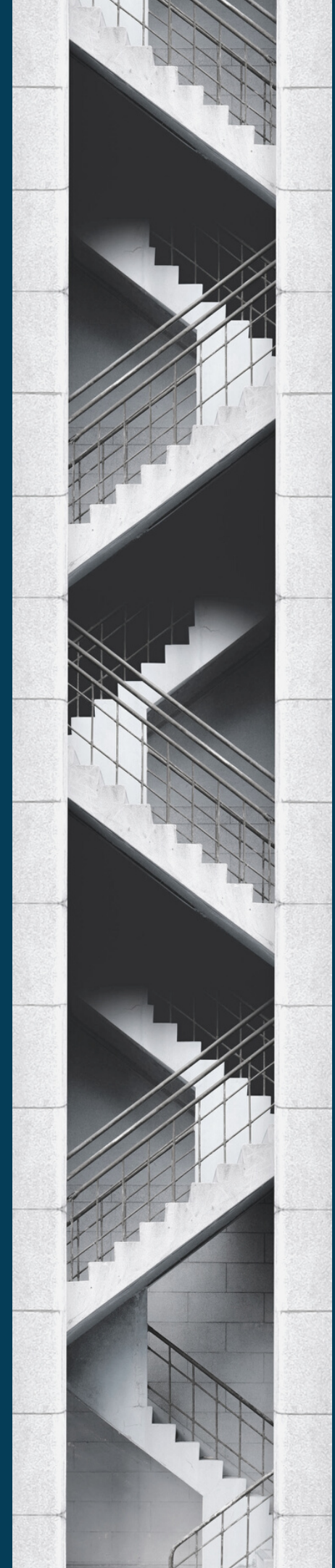
The Company is specialised in Design and Engineering, Construction Management & Consulting , General Contracting (also as Design and Build), AAC plant engineering, real estate development and real estate sales and provides various construction services of sustainable green building systems in specific with **AUTOCLAVED AERATED CONCRETE (AAC)**.

MHE expanded their businesses in the beginning of the 90th to Russia, Sweden, Austria and Germany and return it routs in 1997 back to the United States and later to the Caribbean Islands and Pacific Islands. In 2010 they opened their first office in the Middle East..

MHE has become a market leader with their companies in sustainable Building System Design/Engineering and Construction Management.

MHE designed, engineered and constructed more than 2000 Buildings and has developed the market worldwide for more than a Decade.

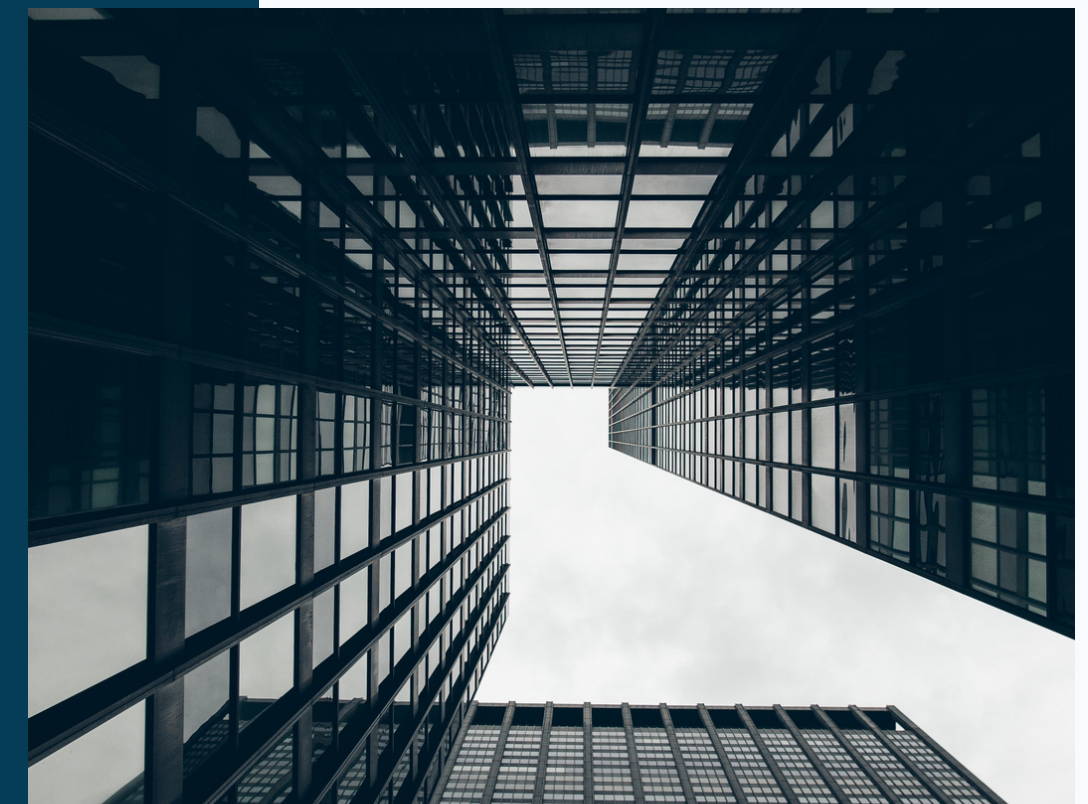
MHE's companies has the required experiences to Design and Engineer, build entire factories and Manage your projects, from Design and Engineering, over Construction Management to turn key hand over, including Site work, Utility, Roads and Bridges.



VISION AND MISSION

To become your Partner for all your Design-Engineering and Construction and Real Estate Needs. Our Performance will be to the highest Quality Standards with excellent Designs and complete Details as well as well thought structural Designs and Details for fast, efficient and low construction cost's.

Our German Construction Management Team, with their well-organized structure, will bring each project to success.



DEPARTMENTS



Design and
engineering

By M.Hofmann
Engineering
Consultancy Ltd. A
Malta Ltd

Construction
management and
consulting

By M.Hofmann
Engineering
Consultancy Ltd. A
Malta Ltd.

Construction by
MHE
construction

Part of MHE-
International LLC a
US LLC and in
Europe MHE-
Concept GmbH a
German
Corporation

AAC Plant
Engineering

By M.Hofmann
Engineering
Consultancy Ltd. A
Malta Ltd

Real estate
development
and sales

By MHE Real Estate
part of MHE Group
and in Europe by
MHE-Concept
GmbH a German
Corporation

AAC
Production

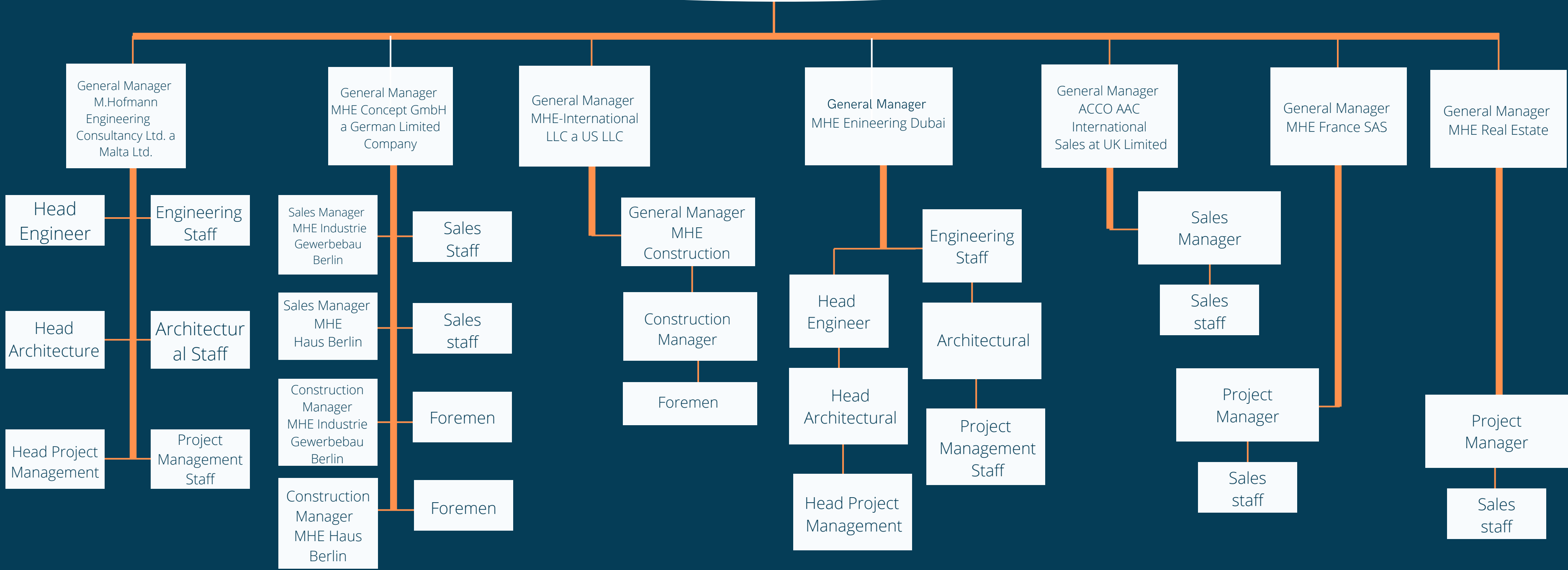
By ACCO AAC part
of MHE Group a
Hong Kong Limited

AAC Material
sales

Worldwide
by ACCO AAC part
of MHE Group a
Hong Kong Limited

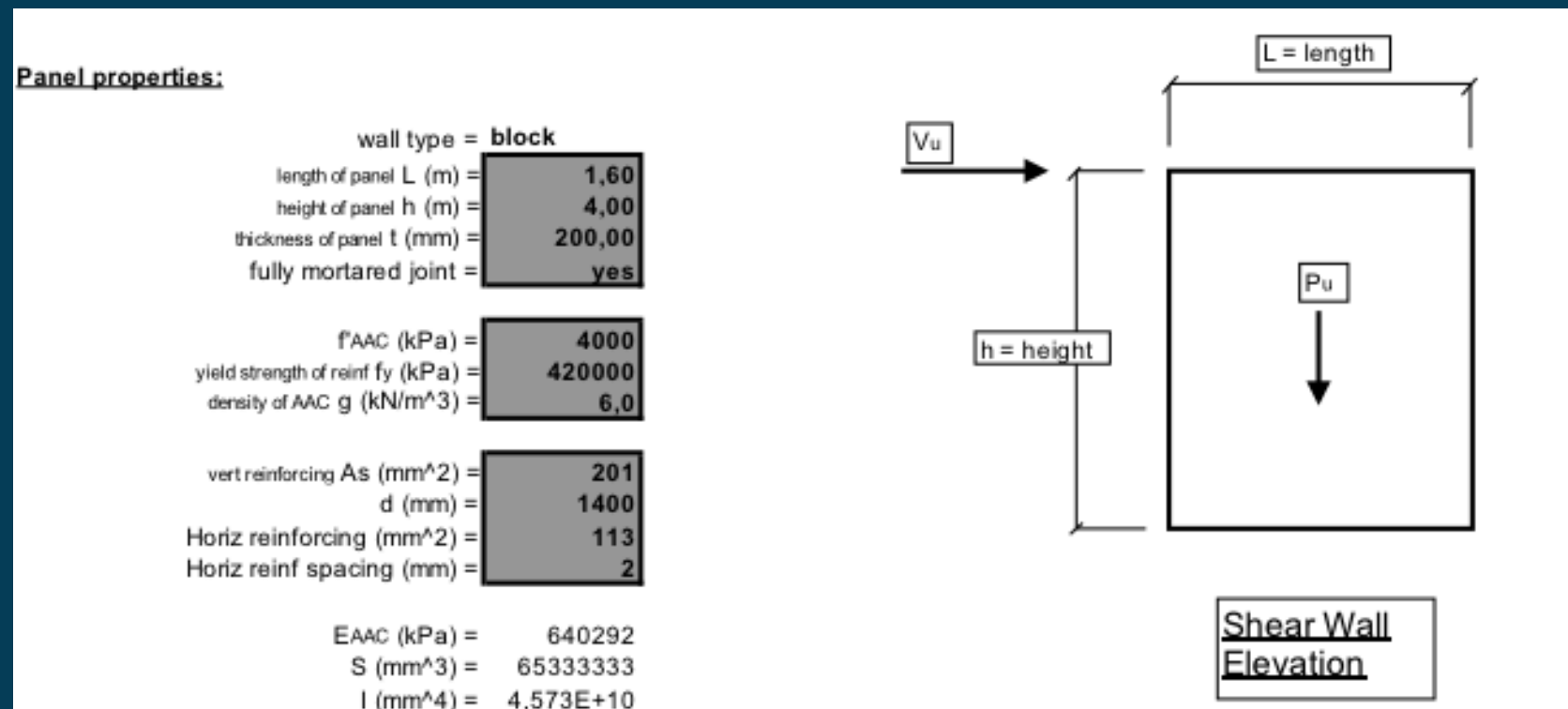
BOARD OF DIRECTORS

MHE Group Limited



DESIGN / ENGINEERING DEPARTMENT

- Master planning, Architectural Design including all MEP Design, Shop drawings, Structural Design, Calculations and full Permit Sets
- Design and Engineering Service
- Structural and MEP Engineering Service
- Safety Inspectors, Quality Control



DESIGN AND ENGINEERING DEPARTMENT

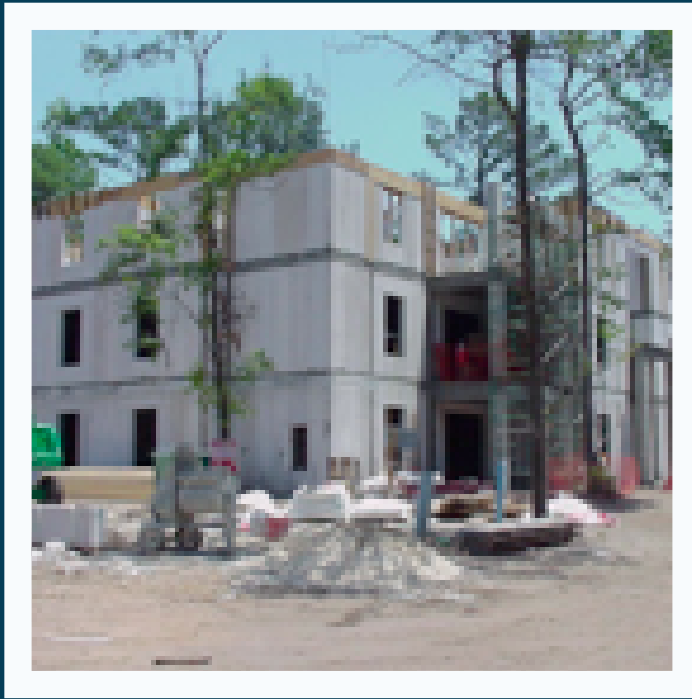
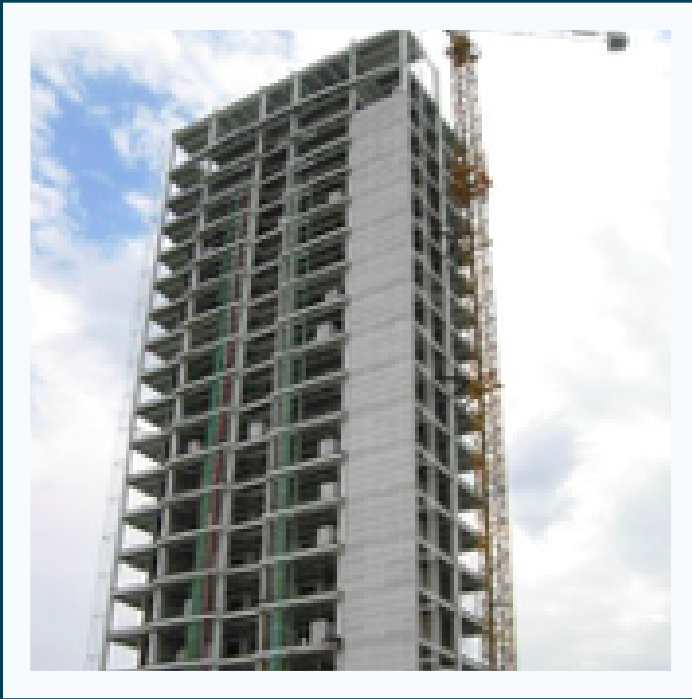
- Project programming, Design review, and constructability reviews as well as feasibility studies
- Value Engineering to increase Construction Quality and Construction Speed and to decrease Construction Cost
- Structural Calculations and Analyses
- Construction Detail Drawings
- Shop Drawings
- Renderings and Visualizations
- AAC Fabrication Drawings and reinforcement Designs of reinforced units



CONSTRUCTION MANAGEMENT DEPARTMENT

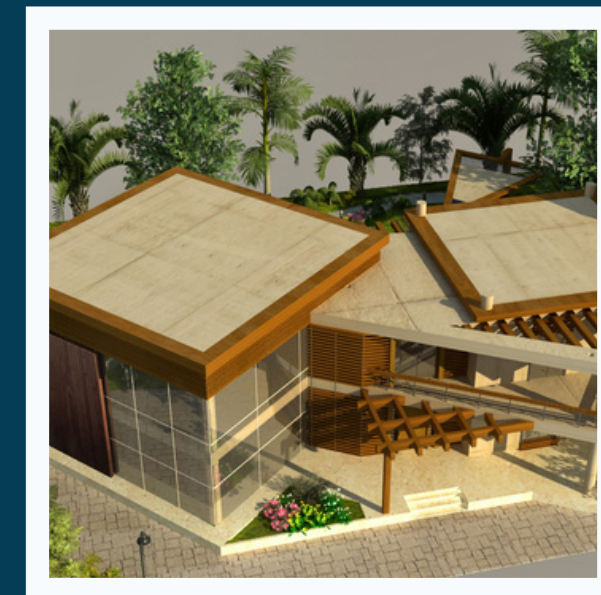
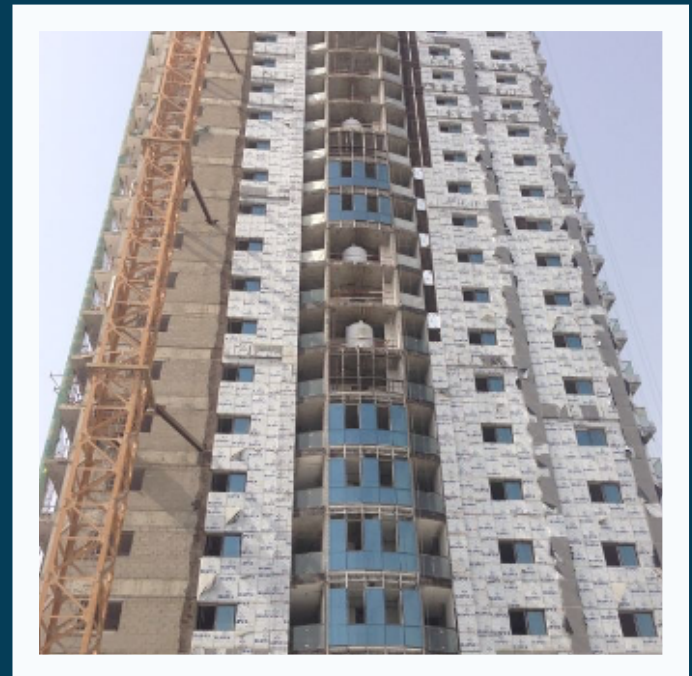
- Project Controls (construction schedule, cost control, & estimating)
- Project Management, Onsite Supervision, Manage and Direct Contractors
- Project Construction Coordination
- Project Administrators/Document Control
- Onsite Quality Control
- Work Inspection
- Progress Payment Approvals
- Review and Report any Delays or variations





CONSTRUCTION DEPARTMENT

- Construct entire Projects including Site work, Utilities, Roads and Bridges
- As Design and Build or per BOQ, Specs and external Drawings and structural Analyses
- Turnkey projects or just Shell Construction



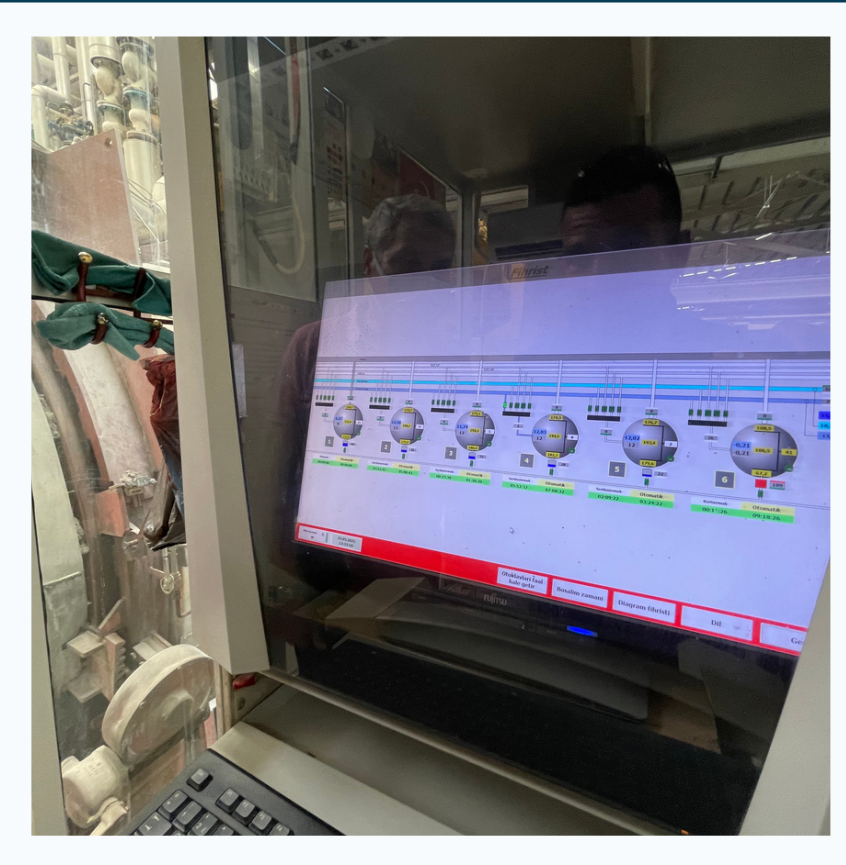
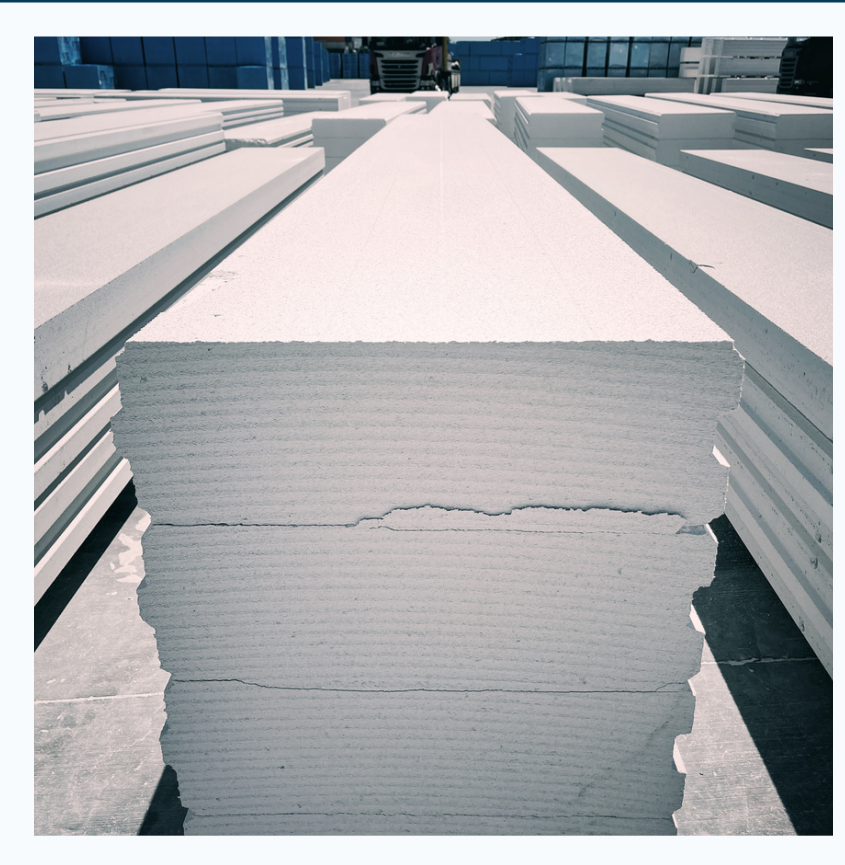
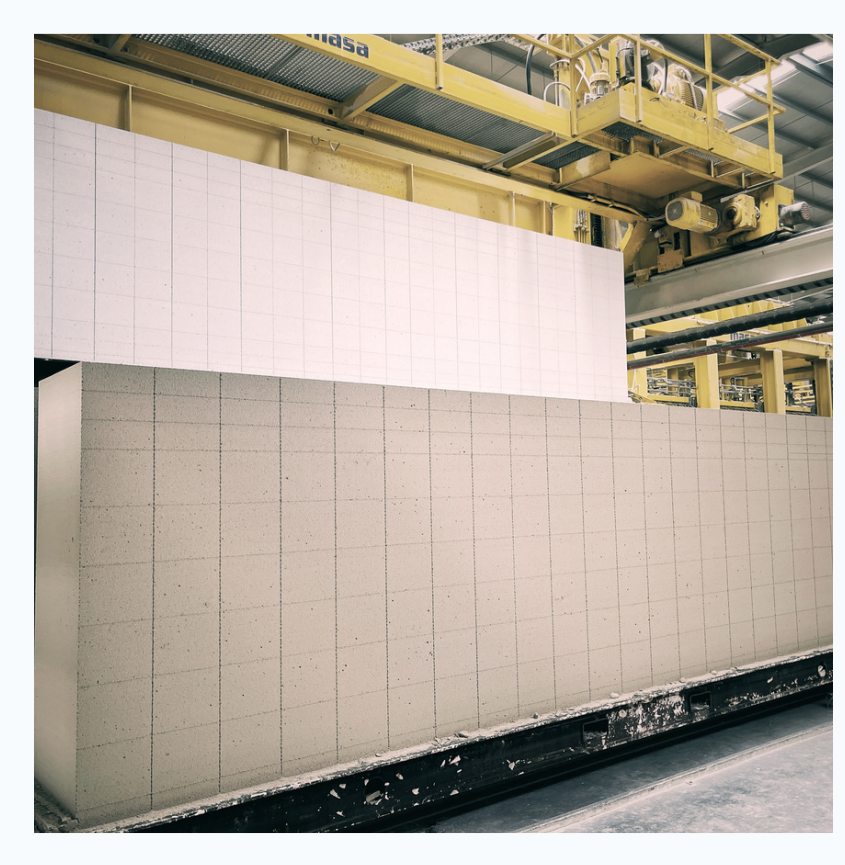
AAC PLANT ENGINEERING

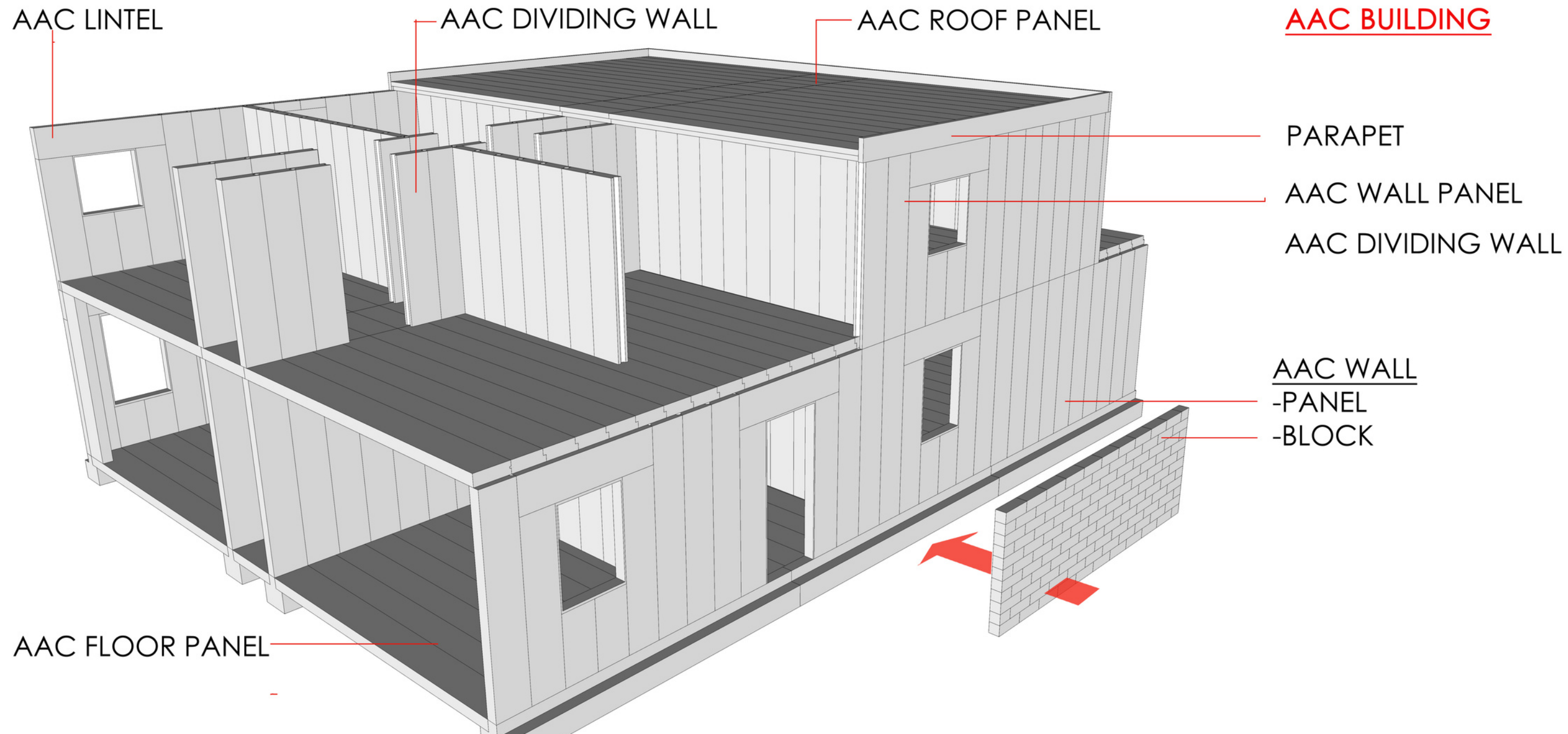
- Deliver and Install new AAC Plants
- Maintain, repair and modify existing AAC Plants
- Plant Expansion
- Managing AAC Plants
- Teaching AAC in Applications



PRODUCE AAC

- Produce reinforced and unreinforced AAC
- Sell and Distribute it worldwide





AAC STRUCTURE

Years of usage

AAC has been used for over 80 years.

Specializations

ACCO developed a load bearing Lightweight Structure System made from ACCO Block Walls or ACCO Panels.

AAC CHARACTERISTICS

50 years of guaranteed durability



Fire Resistance

More superior than traditional masonry for products with fire resistant up to 4 hours for a nominal block thickness of 100 mm

Absorbs Sound

Scientifically proven to provide better insulation to sound transmitted by air compared with other solid building materials.

Energy Efficiency

AAC help reduce at least 30% of environmental waste, decrease 50% of greenhouse radiation and over 60% integrated energy on the surface of brick

Lightweight and Mold & Moisture resistant

AAC density is about one-fifth of that of normal concrete blocks, making it easily handled

Impact Resistant

Ability to withstand impact loads potentially resulting from rough usage.

Dimensional Accuracy

Blocks and panels are manufactured under factory environment using state-of-the art modern machineries resulting in products with tighter dimensional tolerances

Designing with AAC Codes and Standards

LEED Credits Innovation & Design

AAC products and systems carry nationally recognized third-party approvals:

- ASTM Standards / European Norm Standards
- International Building Codes (IBC) 2009
- International Residence Code (IRC) 2006
- ACI 530-05 / EN 1996-1-1
- UL Certifications
- ICC-ES Report – Panels – ESR-2448
- ICC-ES Report- Block – ESR- 2447
- EN 771-4 is the product standard specifically for AAC masonry units with reference to supporting test methods.
- EN 12602-1 standard specification for AAC and EN12602-2 for reinforced AAC
- EN 1998 for seismic design
- EN 1996-1 bldg code requirements and specification for masonry structures

CSI Specifications Division 3 and 4:

- 3440 Reinforced Autoclaved Aerated Concrete Panels
- 4240 Autoclaved Aerated Concrete Units

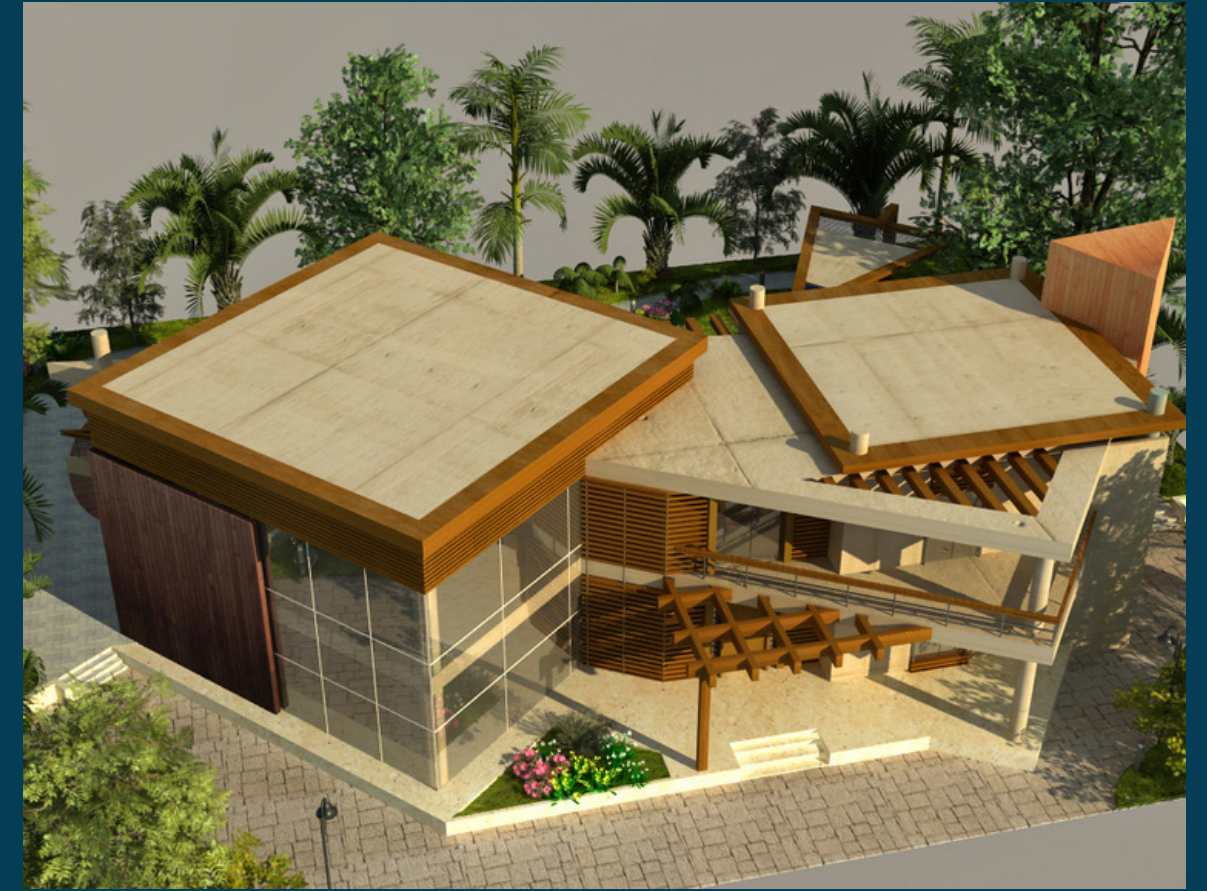
Available from manufacturers, as well as installation manuals and brochures.

CAD Details are available in various digital formats.



REAL ESTATE DEVELOPMENT AND SALES

- From property Purchase over Development to Sales
- MHE provides a A to Z Service



OUR UNIQUE SYSTEM

- Our unique Construction and Production System and Engineering System creates Buildings and Projects which fulfill the newest Building codes and even exceeds current Energy codes
- We provide our service direct for the Owner, Investor or Developer our Construction Team is well educated and are managing the projects to highest Quality in the shortest Construction time.
- Uncompromising commitment to you and the success of your mission with Rigorous schedule and budget control
- Make-it-happen", "Can-do" people/culture, Complete, real-time visibility into your project.
- Due to our unique Company structure, we can provide a ONE STOP Solution from A-Z



HISTORY of MHE

- Formation of the first Design/ Engineering Division in Florida
- Opening of a Development Division (Bauträger) in Berlin/Germany
- Opening of a Construction Management Division in Florida-USA
- Opening of a Construction Management/ Engineering office in Hawaii-USA
- Opening of a Sales office in Seattle- USA
- Opening of a Construction Management/ Design/ Engineering office in Ras Al Khaima-UAE
- Opening of a General Contracting office in Abu Dhabi-UAE
- Opening of a Design Build office in Dubai-UAE
- Opening of a Construction and Design/Engineering Company in Germany
- Opening of a Design / Engineering Firm and Project Management in Malta
- Purchase AAC Plant ACCO AAC
- Opening of a Holding Company in Hong Kong

1986

1989

1997

2005

2008

2010

2011

2013

2017

2019

2019

2020



ACHIEVEMENTS of MHE-International LLC



- Largest Developer in Berlin from East Germany
- Largest Autoclaved Aerated Concrete Contractor in USA

1996
2001



CLIENTS

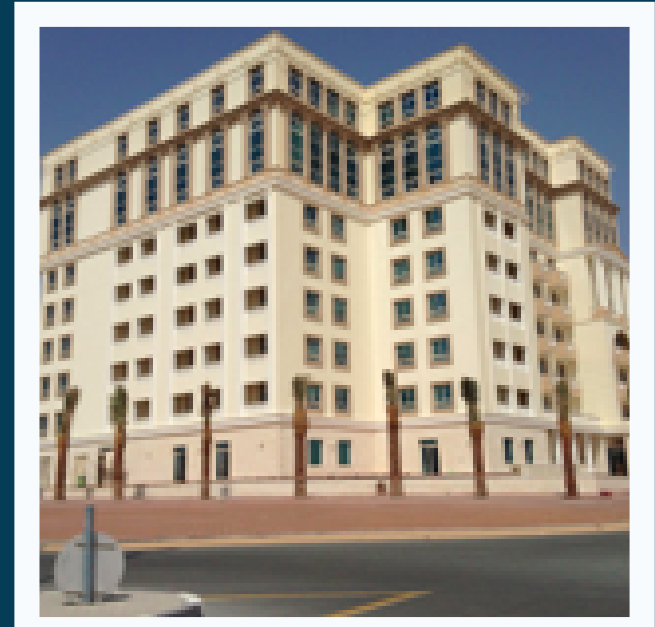
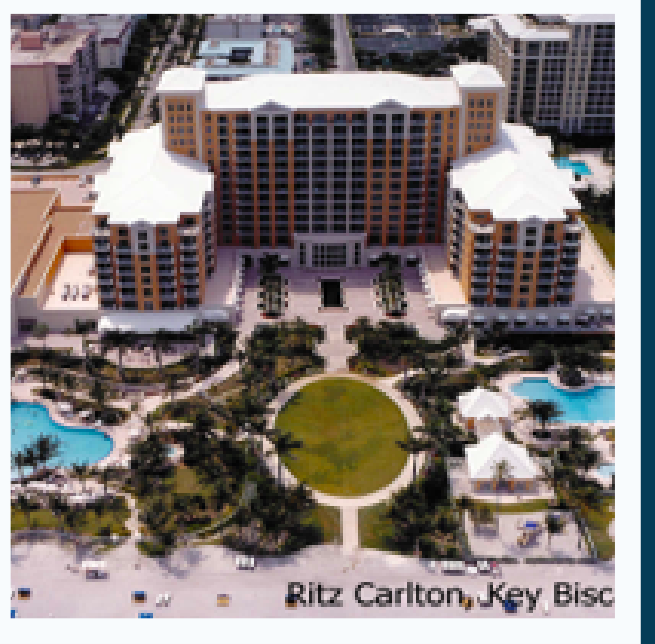


AFFILIATIONS



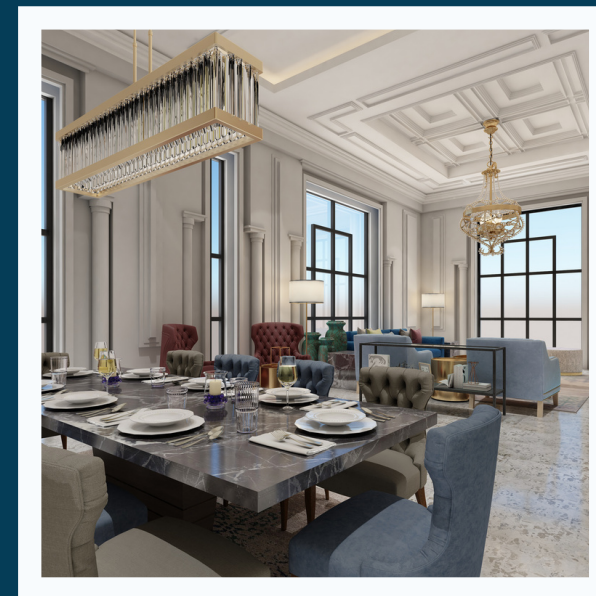
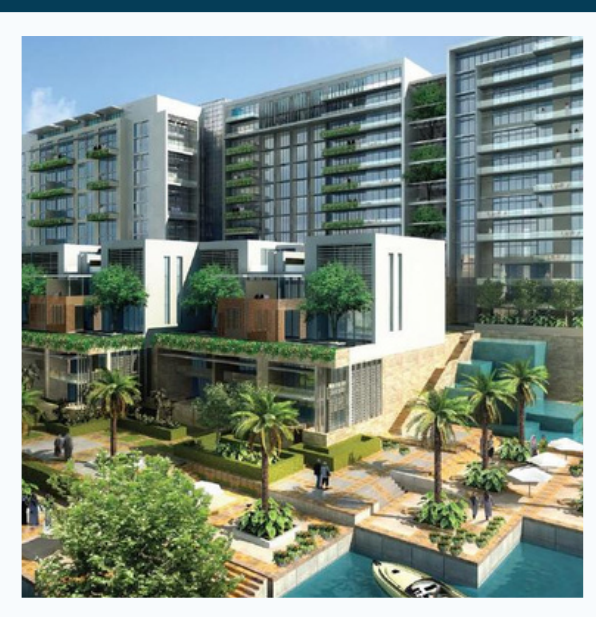
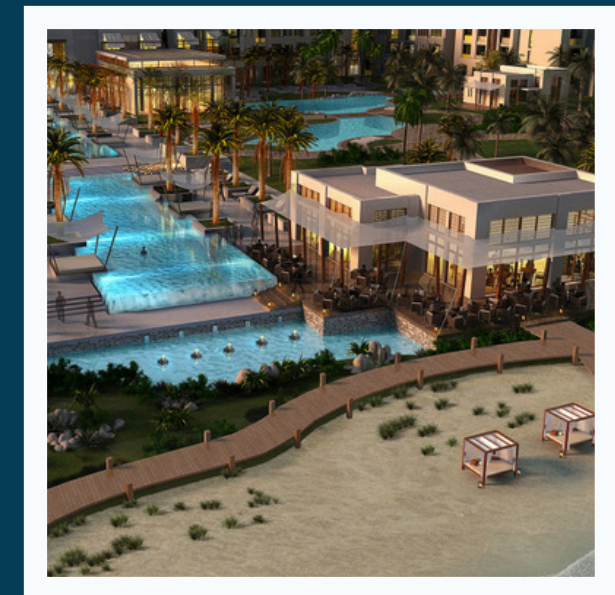
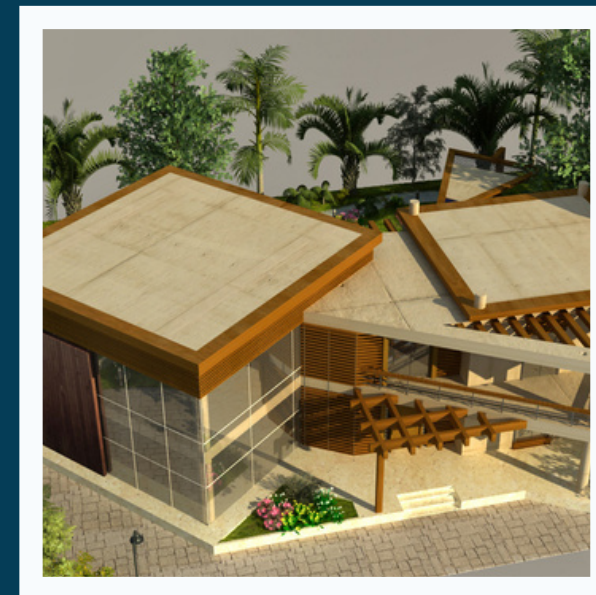


PROJECTS



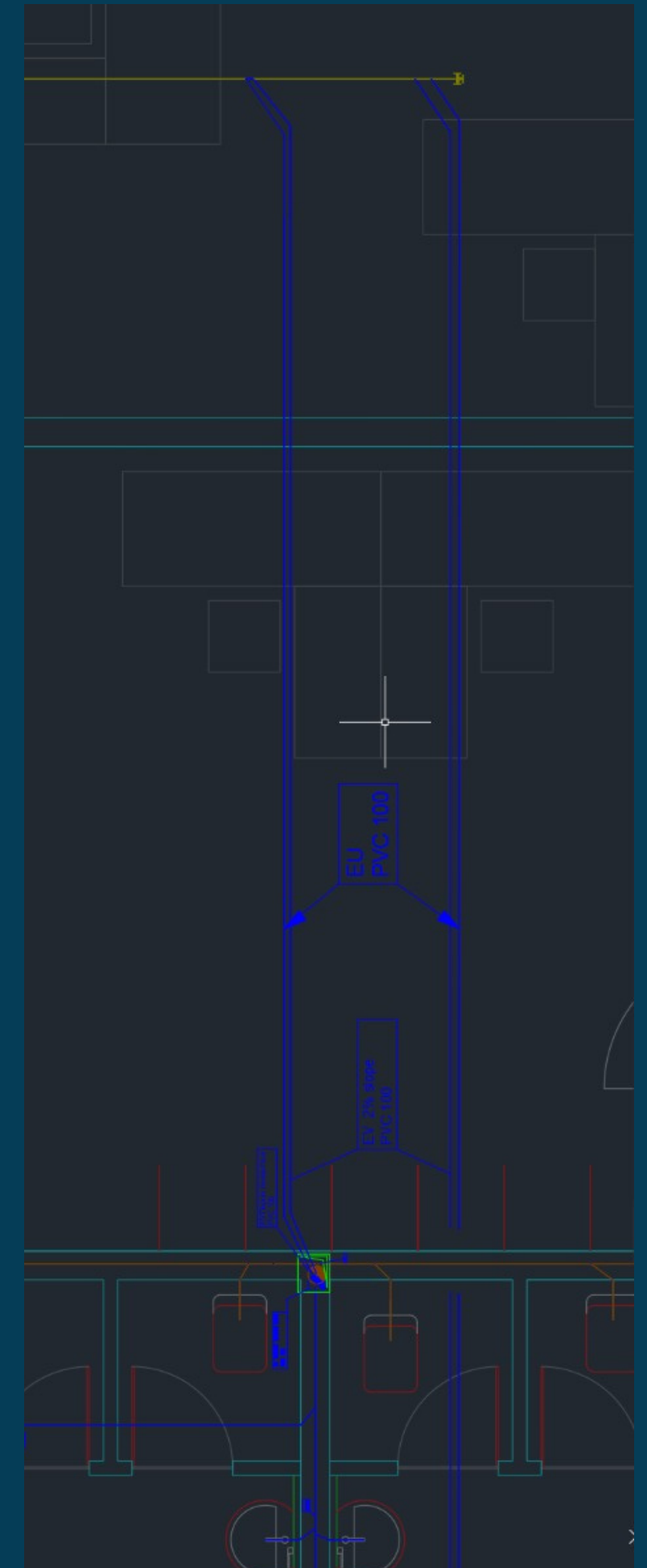
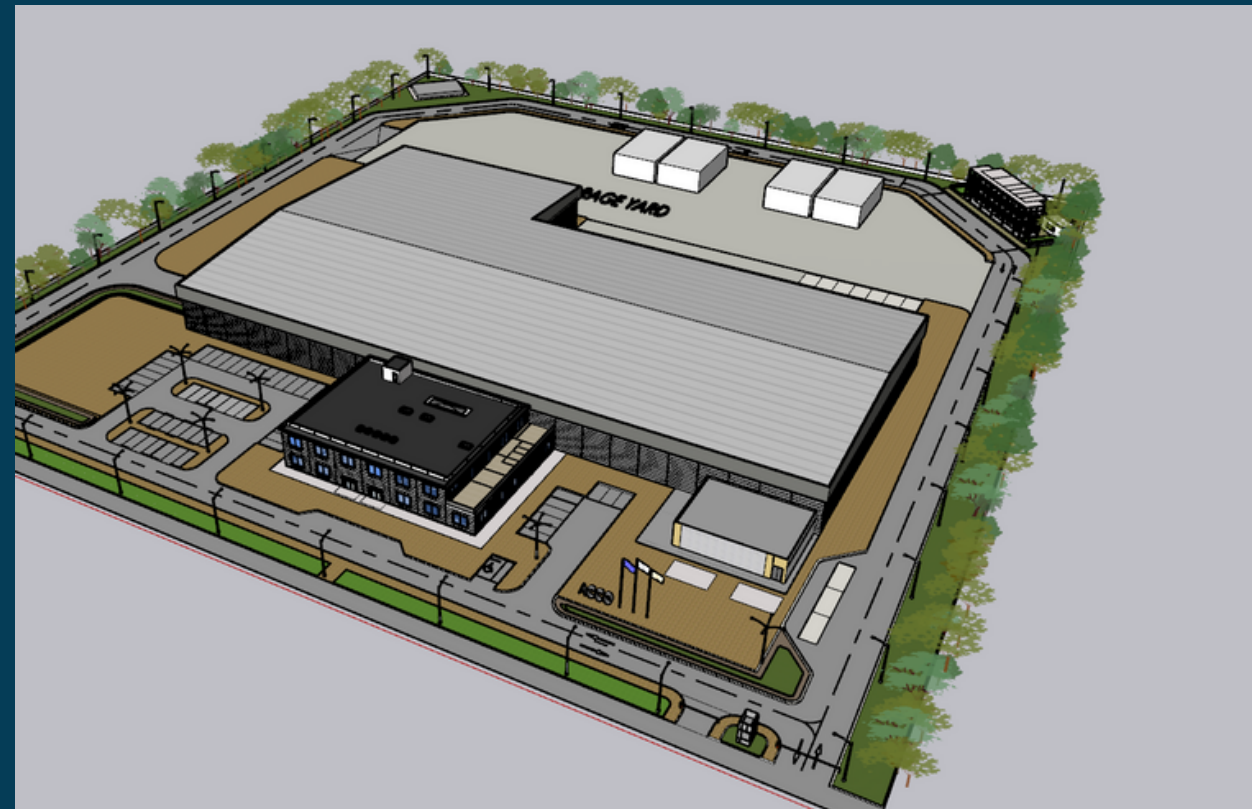
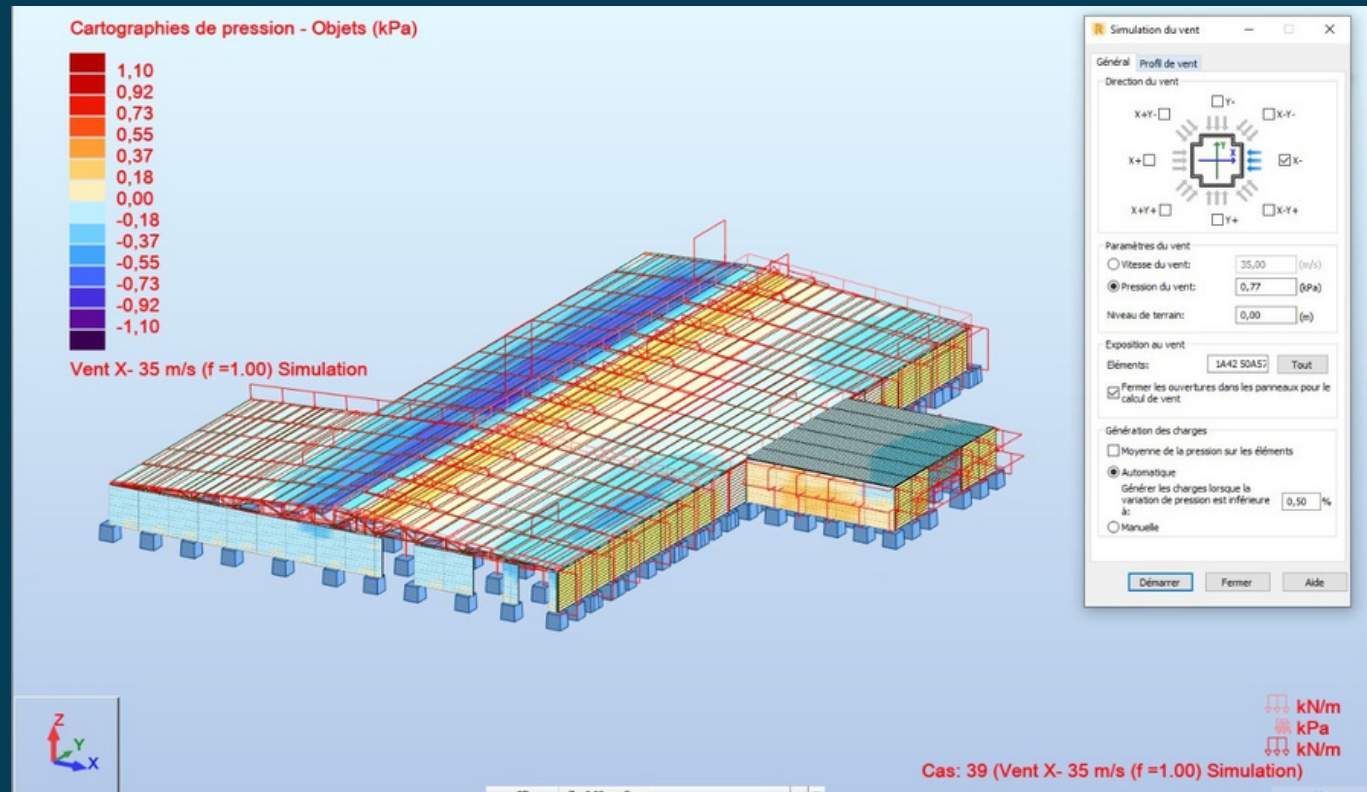


PROJECTS



AAC Plant

Libya project



KEY PERSONNEL



Michael Hofmann is a seasoned construction professional with 32 years of varied construction experience. Michael has Designed and Engineered hundreds of projects and he has constructed most of them. His Sales and Marketing experience was a great benefit to Developers in all projects and he created an enormous market exposure. He also managed the complete construction cycle from; conception, proforma, including design-engineering, constructability analysis, value engineering, estimates, scheduling, permit approvals, construction to closeout with full profit and loss responsibilities. Most of his projects are done with Autoclaved Aerated Concrete. His Sales/Marketing Experience and his Design and Engineering Experience made him at each project an asset

License

- Structural Masonry License C-8569
- Professional Engineer P2639
- Real Estate License IM 948566
- Electrician License ENT 83755
- Crane Operator H 155-540
- Commercial Pilot 590616923

- **Master Science and Civil Engineering**
- **Bachelor Managing/ Marketing Degree**
- **Business Degree**
- **Autoclaved Aerated Concrete Installer (Bauakademie Berlin)**
- **Construction License for Structural Masonry**
- **Fluent in English and German (partly Russian and Swedish)**

Michael Hofmann



Fluent in English and Italian

Attilio Namik Giaquinto is a senior architect and a project manager with 15 years of varied construction experience. In these years Attilio has Designed and Managed different kind of projects around the world. He designed towers in Goregaon, Malad, Mulund and Andheri in Mumbai, India. He designed a Masterplan (5 towers, school, hotel, podium and rehab house) in Mumbai, India for a total of more than 500.000 sqm.

Some of his works: as Designer and Project Manager: Boutique Armani, Milan; Hotel Manin, Milan; Children's Hospital, Tirana, Albania; Villa in Lugano, Swiss, Hotel Armani, Milan; Project Club, London; Villa Violetta, Lugano. He also worked on the Hotel Massai, Lugano, Swiss and on the African Energy institute in Ghana. As part of the Design Team and Project Manager: Boutique Armani, Via Montenapoleone, Milan; Nobu Restaurant, Milan; Armani Privè, Milan; Emporio Armani Flagship Store in Brompton road, London. He was mentioned in the competition for Porta Susa, Turin, and he is in the final phase for the competition of a 60.000 sqm tower in Chembur Mumbai.

His Design Experience was valued by Giorgio Armani and his excellent work made him at each project an asset.

- **Master in Architecture**
- **MBA**

Attilio Namik Giaquinto



Josephus Willem Jacobus (Joost) Terlage is a senior structural engineer and a project manager with 25 years experience. In structural design, detail engineering and project management. In these years Joost has engineered different kind of projects around the world. He engineered Schools, Hospitals, Townhalls, Churches and Police Departments from preliminary Design, cost estimation design over to Detail and execution Design over to Project Management. He is specialized in Autoclaved Aerated Concrete Engineering, in addition to traditional steel structures, concrete structures, wood and Masonry structures and composite structures

Some of his works: as Senior Engineer:

Expansion IKEA Utrecht, European Space Agency, Power Plant Groningen, Multi Level Parking UK, Multilevel housing project BAM Berlin, Housing Project Germany, Housing Project Bonaire, Hotel Royal Amsterdam. Joost is Member of the Ingenierkammer Nordrheinwestfalen, Niedersachsen und Schleswig as well as DGEB Germany. He graduated at the Civil Engineering University HTS in Amsterdam.

His Engineering Experience was valued by many clients and his excellent work made him at each project an asset.

- **Civil. Ing.**

Fluent in English, Dutch and German

Josephus Willem Jacobus



Giorgio Giaquinto (Genoa, Italy, 1941). Architect Project and Site Manager: renovation of Matteotti Theater, Moncalieri, Turin; Cemetery of Rivoli, Turin; ASL Moncalieri, Turin; “Casa protetta” Corso Vigevano, Turin. Road design: Corso Savona and Via Juglaris, Moncalieri, Turin. Shopping Centers: “Porte di Moncalieri” and “KIABI”, Moncalieri, Turin; “Maxi Standa” Rivoli, Turin

Giorgio Giaquinto



Shinobu Hashimoto (Tokyo, Japan, 1969) Architect Participant architect of the new construction project: Turin Ice Hockey Stadium for the winter Olympic game 2006; participant designer of the new towers: Goregaon, Malad, Mulund and Andheri in Mumbai, India. Masterplan (5 towers, school, hotel, podium and rehab houses) in Mumbai, India; participant designer of the Children’s Hospital, Tirana, Albania; participants designer of the proposal for the international campus MOI, Turin

Shinobu Hashimoto



Myrna Cateluzza (Manila, Philippines, 1983). Marketing Director BS in Education, Managed high end project clients including all Correspondence and office Management, International Pharmaceutical, Manila, Material and Craft, Kuwait, Ras Ghurab Island, Abu Dhabi, Mansoor Resort , Abu Dhabi; Al Gurm Retail Center, Abu Dhabi, Bin Laden Group, Dubai

Myrna Cateluzza



● **Siddique Ali (Kerala, INDIA, 1987).** Architect Site architect, Site Arch inspector : Al Gurm Retail center,(Aldar properties Abu Dhabi ,UAE) Al bustan complex: 5 towers (Hotel, Service apartment, Office, 2 Residential Building) Concept Designer: Residential villa project Saudi Arabia, Bin Laden Group

Siddique Ali



● **Ryszard Kaleta (Warsaw, Poland, 1960).** Project Manager. BS in Engineering Warsaw, 6 schools in Florida, USA, 140 duplexes Sarasota Florida, USA, Sleep Inn Hotel, Florida, USA, DOT Boundary wall Arizona, USA, Government building LA, USA, high end residence in Anguilla, BVI, High end residence in Tortola, BVI, Office Buildings, Hawaii, USA, Mansoor resort, Abu Dhabi, UPP labor accommodation, Abu Dhabi, several villas in UAE

Ryszard Kaleta



● **Albert San Juan Villanueva (Manila, Philippines, 1964).** Structural Engineer Albert is the Director of Engineering with a Degree of Structural Engineer Specialist, nationally recognized, He has done projects as; Palau International Airport, U.S. Navy Public Works Center (Guam, M.I.), Honolulu, Treatment Plant Expansion (Honolulu, Hawaii), Lizama Resort Hotel (Saipan), Grand Hotel Tower (Guam)

Albert San Juan Villanueva



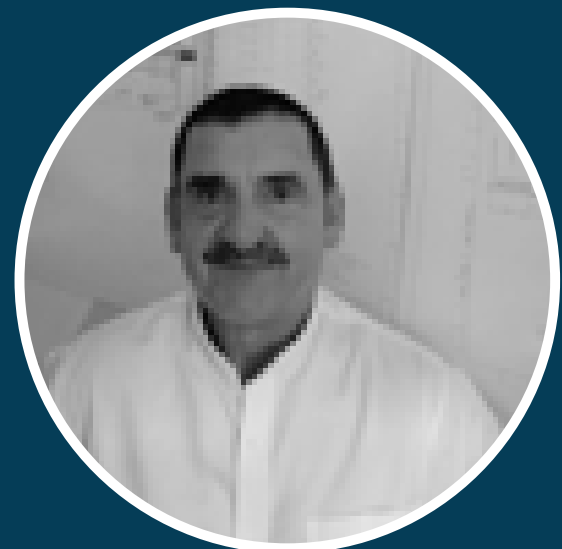
● **Khalil El-Koreh (Jounieh, Lebanon, 1981). Project Manager Project and Site Manager: New Construction of Ciciliano Italien restaurant, Beirut and numerous 6 - 7 Stories residential Buildings in Beirut, Grand Millennium Hotel and Rotana Hotel in Dubai, Alpha G+15 tower and Temple Road tower in Nigeria, Sierra Leone International Conference Center in Sierra Leone, 1000 Apartments and AAC Factory Site Manager in Rwanda**

Khalil El-Koreh



● **Adnan Abdul Sattar (Berlin, Germany, 1966). Structural Engineer and Construction Physics: Structural Engineer for numerous Steel, Concrete and AAC projects including thermal Physics calculations as certified construction Physics, consultant of Energy at the “Verbraucher Zentrale” Berlin, Energy Efficiency Expert**

Adnan Abdul Sattar



● **Eduard Lipensky (Feldkirchen, Austria , 1961). Project Manager, Plant Engineer Certified Welder, Plumber, Shuttering Carpenter and CAD Technician , Factory Manager AG Feltheim and Plant Manager at Cerne Baustoffe, Project Manager for Busstation Essen-Germany, and a AAC Plant Consultant in Rwanda as well as AAC Trainer in Rwanda**

Eduard Lipensky



● **Firas El Nabulsi (Based in Lebanon, 1979), Structural Civil Engineer- Project manager with a diploma in Civil Engineering as well as Sales. developed and managed several projects for the German Emarati Company BENA, System Construct LLC, Limar General Contracting, and Tajj Est. Firas is fluent in Arabic, English, and French with Excellent MS office skills**

Firas El Nabulsi



● **Rym Ben Henda, Paris France - General Manager at MHE France**

Rym Ben Henda



● **Luca Wilkens, 11.02.1999 Luca has experience for more than 3 years, he is actively involved in finance Business specialised in crypto and asset trading. Luca is Partner of MHE Group Ltd, Malta. Luca is trained and educated in Germany**

Luca Wilkens



● **Talib Youis Al Imari (Dubai, UAE, 1965).** Architect: numerous Architectural Projects and Real Estate and Factory Planning Projects in Jordan, Abu Dhabi and Dubai, Murror Compley G+27 and Al Sawan Towe G+25, Ajman Water Front G+17 and 6 Residential towers, Architect for Al Taji Juice Factory, Lays Factory, Al Imarah Theme Park, Al Masiriya Shopping Complex, Dubai Savory and Dubai Frame

Talib Youis Al Imari



● **Irfan Khan (London, UK 1992).** BSc Architectural Technology: Junior Project Manager and site architect Latest Project managed as Project Manager and Site Architect where projects in Belgium, Latvia, UAE and in the UK. Irfan has also College Degree in Environmental Science & Design Technology. He speaks English, Pushto, Hindi and Arabic

Irfan Khan



● **Ones Lahmer (Berlin, 1994).** Digital Marketing Manager: Junior marketing manager with an experience in France and Germany, finished masters of Arts at Cologne Business School with a degree in Digital marketing, then started her first work experience with one of the most recognized marketing agencies in Germany. Ones speaks Arabic, French, English and German.

Ones Lahmer



● Hakim Dorboz (Tunisia, 1994) Civil Engineer, a Highly qualified engineer, managing multi-criteria analysis, calculation of applied loads, and design of main beams and Support Devices.

Hakim Dorboz



● Meriem Ben Youssef (Tunisia, 1993), Architect, site architect, conception of exterior and interior look, plan for residential projects.

Meriem Ben Youssef



● Mohsen Sadok (Tunisia, 1994) Electric Engineer, Developed industrial IOT system on AWS with experience at fast integrated services Doha, helped design and program a building management system (BMS), Programmed and implemented of a SCADA HMI system of a manufacturing process.

Mohsen Sadok



● Ghada Graduated as an energetics engineer with a thermal systems and environment specialization . Within the same period of time she had her masters degree in management of industrial systems . her aim is to be an international generalist engineer combining both mechanical and electrical skills . One of her recent experiences is being part of the team that designed the new control system of POD GRADOM the world second hydropower plant .

Ghada Siliani

PROJECT REFERENCES

- AUH Abu Dhabi villa project
- Libya AAC Plant project
- Current Design and Engineer several AAC structures in Malta and Mayotte
- Current 1000 residential units and an AAC factory in Rwanda Africa
- Four Warehouses in Germany
- Five Single Family Homes in Germany
- Retractable roof , Peek & Cloppenburg, Duisburg
- Busstation Essen Kupferdreh,
- Retractable roof for a cruise Ship Meyer Werft, B
- Tensileprojects under CENO Membrantechnology GmBH, Germany, Holland, Denmark (Tabaluga, Wöhr Fassaden, Membrandach Beck, Sopus Campus, Schmetterlingswiese Österreich, Tannenhausen, Alliander Attika, Meyerwerft, ecklenburgTheater u.s.w.)
- Manufactory in Tripolis, Libya
- Two High rises, DUBAI- two Tower 20 & 23 floors,
- Villa St. Tropez, France, renovation of an ancient villa of 500 sqm, G*AA
- Residential Villa, Brescia, garden design with swimming pool and underground garage, G*AA
- Residencial Towers and services, Mumbai, 524 residencial units + 6000 sqm of services, G*AA

2021
2021
2020

2019
2018-2019
2017-2019
2019

2018-2019
2018-2019
2014-2016

2014-2016
2013-2015
2013-2014

2012-2013

2012-2013

- High End Shopping Center, Abu Dhabi
- Residencial Towers and services, Andheri, Mumbai, 39000 sqm, G*AA
- Residencial Towers and services, Goregaon, Mumbai, 42000 sqm, G*AA
- Project Club, London, G*AA
- Hotel Manin, Milan
- Residencial Towers and services, Mulund, Mumbai, 38000 sqm G*AA
- Residencial Towers and services, Malad, Mumbai, 33000 sqm, G*AA
- 5 Chalets, Main Building, Pool Building and Service Block with 30,000 m2, Abu Dhabi-
- Residential and Commercial Projects in UAE
- Private apartment, Turin
- High end Residence Subdivision, Tortula
- Residence, Kalihi, Hawaii ,3 stories
- High end Residence, Anguilla, West Indies
- Child Clinic, Tirana, Albania, preliminary and definitive project, G*AA
- University Campus, Finchley Road, London UK, Extension of the ESCP Europe campus, G*AA
- Warehouse, Waipaha Hawaii
- High end Residence, Kaanapali, Hawaii
- International Campus To MOI
- 2007-2008 High end Residence, Lahaina, Hawaii

2012-2013
2013-2014
2012-2013

2012-2013

2012-2013
2012
2012
2010-2012

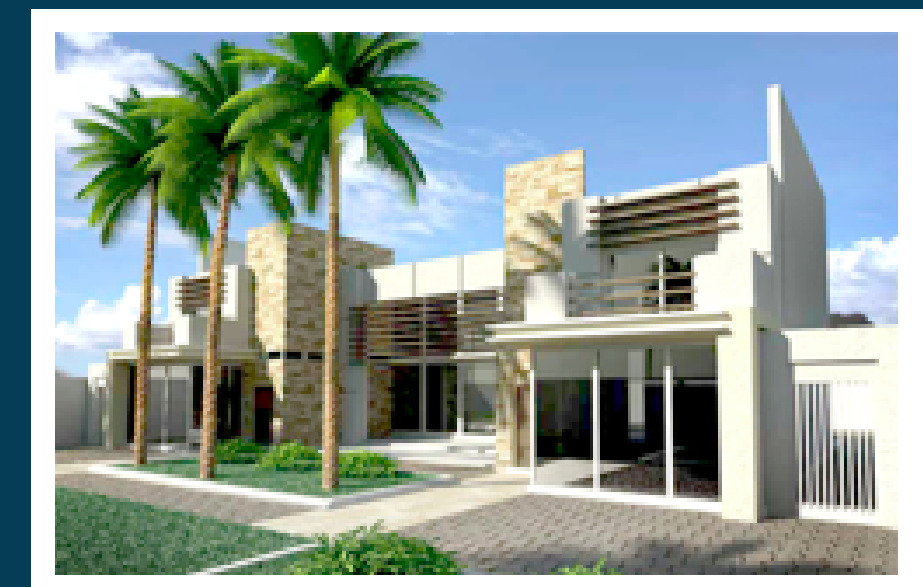
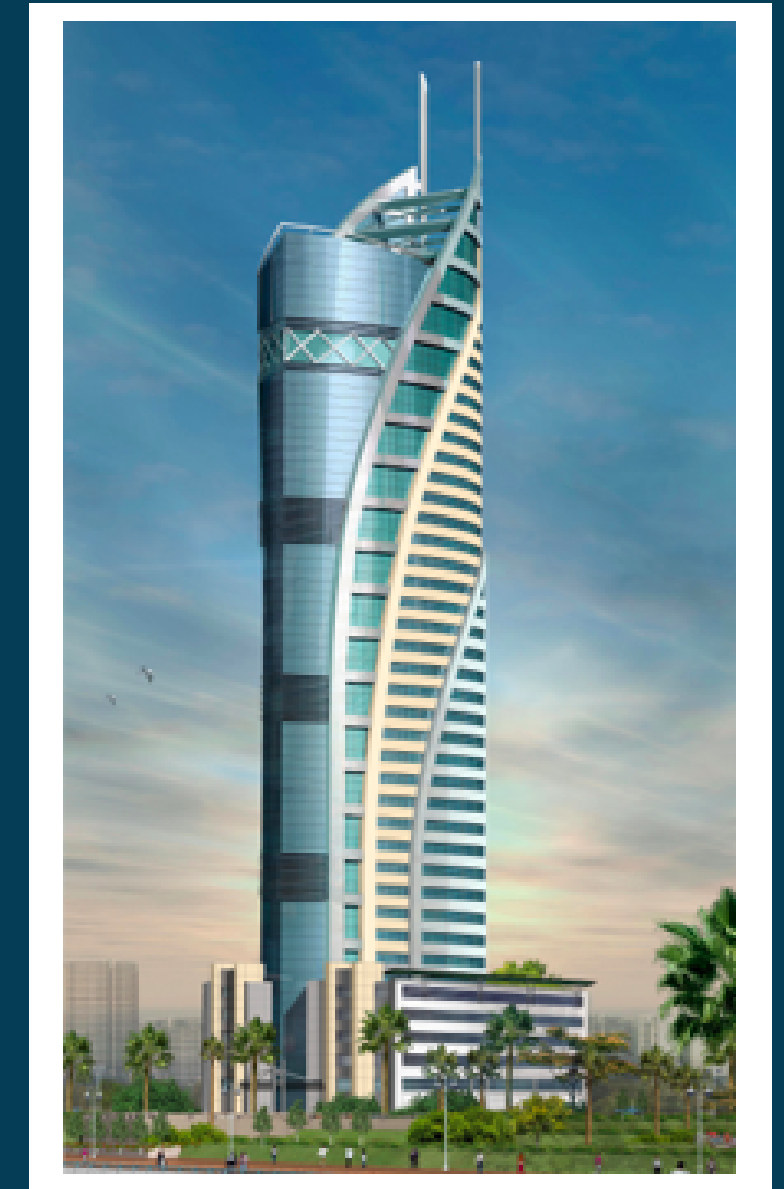
2009-2010
2008 -2009

2008
2008
2008
2008

2008

2005-2008
2006-2008
2007-2008

2006-2008



PROJECT REFERENCES

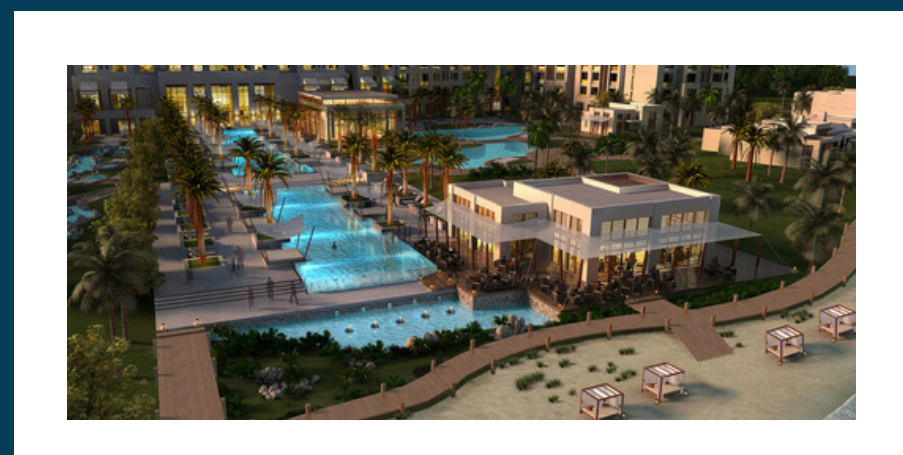
- Armani/Nobu Restaurant, Milan
- Private Apartment, Turin
- Residences, Ghana
- Sound barrier Wall, 300 m long on sloped property Haiku, Hawaii
- Private Apartment, Turin, 90 sqm
- Two Restaurants, Burger King and KFC, EwaBeach, Hawaii
- Giorgio Armani Boutique, Milan, 215 sqm of extension of "Armani Collezioni
- Fort Lauderdale, FL, 24 story tower
- Private Apartment, Turin, 175 sqm, G*AA
- Sleep Inn Hotel, Ocala, FL 74 rooms, 3 stories Building
- Business Development, Miami 28 story
- Neo River Lofts Miami River
- Sound Barrier wall project SR 51 Phoenix, AZ
- Lan Chile/Fine Air Eastern "U" Project , Miami FL
- Private House, Villa Violetta, Lugano, Switzerland
- Private Apartment, Turin, 90 sqm, G*AA
- Logistic Center for Louisiana DOT Chalmette, LA
- Ritz Carleton Hotel – Key Biscaya, Miami, 22 story
- Ocean Steps South Beach, Miami 16 story condominium tower
- Hotel Massai, Lugano, Switzerland, hypothesis of project for a hotel of 2000 sqm, G*AA
- Randall Store Woodland, TX 9,000 sqm wholesale center
- Fortune House Brickell Ave, Miami, 28 story Hotel Apartments

2007
2007
2007
2007
2007
2005
2005
2005
2005
2004-2005
2004
2003
2003-2004
2003
2003
2003
2003
2002
2002
2001
2001
2001
2001

- Microtel, Hotel, Lady Lakes, FL, 4 Story 120 room
- Southern Grove Town Homes Jacksonville, FL
- Food Lion store 511 Jacksonville, FL
- Porta Susa Train Station, Turin, International competition, G*AA
- Challenge Air Cargo Facility , Miami, FL MIA
- American Airlines Cargo Building Extension Miami, FL
- Golden Glades HOV North Miami
- Fish Music Restaurant, Turin, project, G*AA
- Holiday Inn, Hotel Sarasota, FL, 6 story Hotel
- Avalon Park-Duplex Sarasota, FL , 9 Buildings 3 story each
- High End Residence, Windermere, FL
- Mitchel Elementary School Tampa, FL
- Mendenhall Elementary School Tampa, FL
- South East College Lakeland, FL , 5 Buildings 3 story each
- Villa Rosa, Elementary School Tampa, FL
- Egypt Lake Elementary School Tampa, FL
- Titusville High school Titusville, FL
- Genertek, Energy Building Lakeland, FL
- Tampa Bay Tech Center Tampa, FL
- GERMANY, RUSSIA, SWEDEN and AUSTRIA

More than 350 residential homes, Duplexes and town homes, 4 vacation parks , 40 office buildings and warehouses, 15 Hotels, 5 Churches and diverse other Buildings.

2000- 2001
2000 - 2001
2000
2000
2000
2000
2000
1999-2000
1999-2000
1999-2000
1999-2000
1998-1999
1998
1998
1998
1997
1997
1997
1986- 1997



Our Promise

“To provide efficient services in order to achieve the client’s satisfaction beyond expectation”

Michael Hofmann
MANAGING DIRECTOR



SE Asia: MHE-International Philippines
National Highway
Poblacion Diplahan
7039 Zamboanga Sibugay



+63 99730 22874



ACCO AAC International Limited
Victoria Street,
London SW1E
5NEUnited Kingdom



+44 20 8638 5907



HQ and Asia office: MHE Group Limited
RM 6A 7/F BLK GRAND IND BLDG, 159-165 WO YI
HOP RD KWAI
CHUNG NT, Hong Kong
Office: +852 8170 0209
Reg.# 2946005
Cert.# 71906784-000-05-20-9



Germany: MHE Concept GmbH
Ruppiner
Chaussee 19a 16761
Hennigsdor



+ 49 2572 9659953



Malta: M.Hofmann
Engineering Consultancy Ltd
44, St Anthony Street, Sliema
SLM3021- Malta



+356-3550 5965
+356 99000700



USA: MHE-International
LLC State of Delaware
3511 Silverside Road
Suite 105 Wilmington, DE
USA 19810



+1 (302) 525-0554



North Africa: Mhofmann Engineering
Consultancy office.
Imm Mahdia Centre D32 3rd floor
+216 58678966



Middle East: Michael
Hofmann Architectural
& Engineering Consultans
L.L.C. 22 M Floor Aldoora
Building Sheikh Rashed
Road, Corniche Ajman, UAE



+971509152127